

MAURICE RIVER CORRIDOR STUDY

What is the Maurice River Corridor Study?

The Maurice River Corridor Study is looking at opportunities for eco-tourism and future greenway restoration initiatives. The Study is exploring ways to promote economic development in the Corridor by offering connectivity to existing businesses, recreation resources, education centers, and entertainment amenities. This effort will lay the groundwork for the future connectivity of Cumberland County into the more extensive South Jersey Trails or Circuit Trail networks and guide the preservation and enhancement of the Corridor.

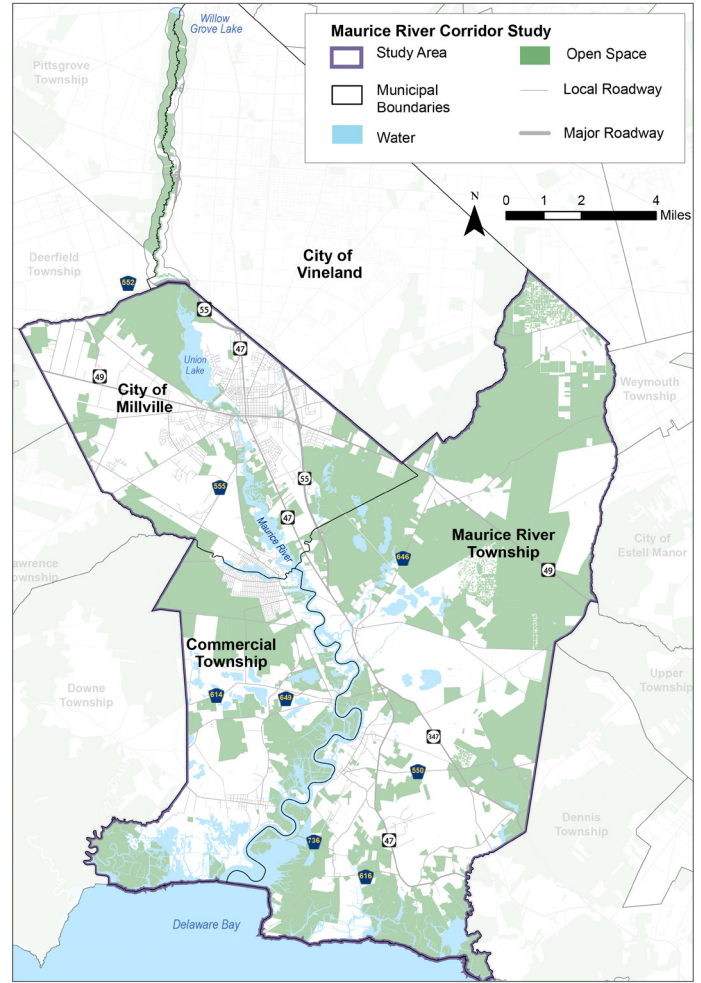
What is the outcome of the Maurice River Corridor Study?

The Corridor Study includes planning recommendations and implementation strategies to advance connectivity, eco-tourism, economic development, and preservation of the Corridor.

The Maurice River Corridor Study Area

The Maurice River Corridor Study Area includes the municipalities of Commercial Township and Maurice River Township (including where the River meets the Delaware Bay), the City of Millville (including Union Lake), and the river corridor along Vineland and Salem County boundary, ending at Willow Grove Lake (see map to the right).

Maurice River Corridor



Images from Public Meeting #1

JOIN US FOR FINAL PUBLIC MEETING

What?

The Project Team is holding a final public meeting to hear the recommendations from the Study. During this meeting, you will have the opportunity to provide feedback on the suggested activities and implementation for consideration in the final report.

When?

Wednesday, May 15, 2024 at 4:30 pm

Where?

Cumberland Extension Center
291 Morton Ave Millville, NJ 08332