



South Jersey
Transportation
Planning Organization

Federal Fiscal Year 2024-2033

TRANSPORTATION IMPROVEMENT PROGRAM (TIP)

Executive Summary

817 East Landis Avenue, 2nd Floor • Vineland, New Jersey 08360

P: (856) 794-1941 • F: (856) 794-2549

www.sjtpo.org

Leonard Desiderio, Chairman • Jennifer Marandino, Executive Director

ENGLISH

Attention: If you wish to request this publication in another language other than English, or wish to contact SJTPO for our language assistance, please call (856) 794-1941 or email TitleVI@sjtpo.org. Additional charges may apply for reprint of our publications.

SPANISH / ESPAÑOL

Atención: Si desea solicitar esta publicación en otro idioma que no sea inglés o desea comunicarse con SJTPO para recibir asistencia con nuestro idioma, llame al (856) 794-1941 o envíe un correo electrónico a TitleVI@sjtpo.org. Pueden aplicarse cargos adicionales por la reimpresión de nuestras publicaciones.

CHINESE / 中文

注意：如果您想要申请英语以外其他语言的本出版物，或者希望与 SJTPO 联系以获取我们的语言帮助，请致电 (856) 794-1941 或发送电子邮件至 TitleVI@sjtpo.org。重印我们的出版物可能需要支付额外费用。

VIETNAMESE / TIẾNG VIỆT

Lưu ý: Nếu bạn muốn yêu cầu ấn phẩm này bằng một ngôn ngữ khác không phải là tiếng Anh, hoặc muốn liên hệ với SJTPO để được hỗ trợ ngôn ngữ của chúng tôi, vui lòng gọi (856) 794-1941 hoặc gửi email TitleVI@sjtpo.org. Các khoản phí bổ sung có thể áp dụng cho việc in lại các ấn phẩm của chúng tôi.

GUJARATI / ગુજરાતી

ધ્યાન આપો: જો તમે અંગ્રેજી સિવાયની અન્ય કોઈ ભાષામાં આ પ્રકાશનની વિનંતી કરવા માંગતા હોવ, અથવા અમારી ભાષા સહાય માટે એસજેટીપીઓનો સંપર્ક કરવા માંગતા હોવ, તો કૃપા કરીને (856) 794-1941 પર કોલ કરો અથવા TitleVI@sjtpo.org પર ઇમેઇલ કરો. અમારા પ્રકાશનોને ફરીથી છાપવા માટે વધારાના શુલ્ક લાગુ થઈ શકે છે.

OTHER INDIC LANGUAGES:**BENGALI / বাংলা**

মনোযোগ দিন: আপনি যদি এই প্রকাশনাকে ইংরেজি ব্যতীত অন্য কোনও ভাষায় অনুরোধ করতে চান বা আমাদের ভাষা সহায়তার জন্য SJTPO-র সাথে যোগাযোগ করতে চান, তবে (856) 794-1941 কল করুন বা ইমেল TitleVI@sjtpo.org করুন। আমাদের প্রকাশনা পুনরায় মুদ্রণের জন্য অতিরিক্ত ফি প্রযোজ্য হতে পারে।

HINDI / हिंदी

ध्यान दें: यदि आप अंग्रेजी के अलावा किसी अन्य भाषा में इस प्रकाशन को प्राप्त करना चाहते हैं, या हमारी भाषा सहायता के लिए SJTPO से संपर्क करना चाहते हैं, तो कृपया (856) 794-1941 पर कॉल करें या TitleVI@sjtpo.org पर ईमेल करें। हमारे प्रकाशनों के रीप्रिंट के लिए अतिरिक्त शुल्क लागू हो सकते हैं।

NEPALI / नेपाली

ध्यान दिनुहोस्: तपाईं यो प्रकाशन अङ्ग्रेजी बाहेकको भाषामा चाहनु हुन्छ वा भाषागत सहायताको लागि SJTPO लाई सम्पर्क गर्न चाहनुहुन्छ भने (856) 794-1941 टेलिफोन गर्नुहोस् वा TitleVI@sjtpo.org मा इमेल गर्नुहोस्। तपाईं यो जानकारीको प्रिन्ट चाहनुहुन्छ भने थप शुल्क तिर्नु पर्ने हुन्छ।

URDU / اردو

دھیان دیں: اگر آپ انگریزی کے علاوہ کسی اور زبان میں اس اشاعت کی درخواست کرنا چاہتے ہیں، یا ہماری زبان کی امداد کے لئے ایس جے ٹی پی او سے رابطہ کرنا چاہتے ہیں تو، براہ کرم (856) 794-1941 پر کال کریں یا TitleVI@sjtpo.org پر ای میل کریں۔ ہماری اشاعتوں کی دوبارہ اشاعت کے لئے اضافی چارجز لگ سکتے ہیں۔

PUNJABI / ਪੰਜਾਬੀ

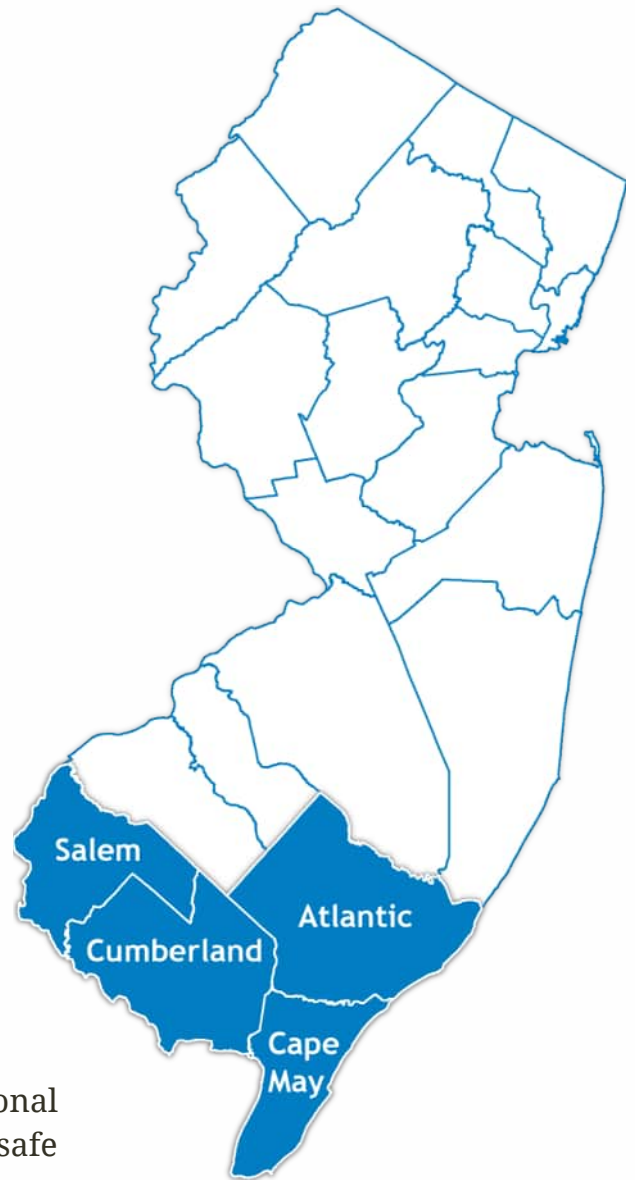
ਧਿਆਨ ਦਿਓ: ਜੇ ਤੁਸੀਂ ਇਸ ਪ੍ਰਕਾਸ਼ਨ ਨੂੰ ਅੰਗਰੇਜ਼ੀ ਤੋਂ ਇਲਾਵਾ ਕਿਸੇ ਹੋਰ ਭਾਸ਼ਾ ਵਿੱਚ ਪ੍ਰਾਪਤ ਕਰਨਾ ਚਾਹੁੰਦੇ ਹੋ, ਜਾਂ ਸਾਡੀ ਭਾਸ਼ਾ ਸਹਾਇਤਾ ਲਈ SJTPO ਨਾਲ ਸੰਪਰਕ ਕਰਨਾ ਚਾਹੁੰਦੇ ਹੋ, ਤਾਂ ਕਿਰਪਾ ਕਰਕੇ (856) 794-1941 'ਤੇ ਕਾਲ ਕਰੋ ਜਾਂ TitleVI@sjtpo.org ਦੇ ਪਤੇ 'ਤੇ ਈਮੇਲ ਭੇਜੋ। ਸਾਡੇ ਪ੍ਰਕਾਸ਼ਨ ਦੁਬਾਰਾ ਛਾਪਣ ਲਈ ਵਾਧੂ ਖਰਚੇ ਲਾਗੂ ਹੋ ਸਕਦੇ ਹਨ।



South Jersey Transportation Planning Organization

WWW.SJTPO.ORG

SJTPO is the federally recognized Metropolitan Planning Organization (MPO) for the southern New Jersey region, serving Atlantic, Cape May, Cumberland, and Salem Counties. Under federal law, the formation of an MPO is required for any urbanized area (UZA) with a population greater than 50,000, permitting the MPO to carry out transportation planning and decision-making for the UZA(s). Formed in 1993, SJTPO replaced three smaller existing MPOs and incorporated areas not previously served. The formation provided a stronger regional approach to solving transportation problems and brought new opportunities to southern New Jersey. SJTPO is vital to the region, as the MPO serves as a technical resource, provides access to funding, and works to provide a regional approach to address transportation planning and engineering issues.



Four counties, one mission:

to create a transportation system, based on regional collaboration that moves people and goods in a safe and efficient manner, inclusive of all modes and users.

Title VI Compliance / SJTPO fully complies with Title VI of the Civil Rights Act of 1964, the Civil Rights Restoration Act of 1987, Executive Order 72898 on Environmental Justice, and related nondiscrimination mandates in all programs and activities. SJTPO's website, www.sjtpo.org, may be translated into multiple languages. Publications and other public documents can be made available in alternative languages and formats, if requested. SJTPO's public meetings are always held in ADA-accessible facilities and held in transit-accessible locations whenever possible. SJTPO will work to accommodate all reasonable requests for translation, interpretation, or auxiliary services, but encourages that requests be made at least seven days prior to public meetings to ensure that SJTPO is able to secure requested services. Other translation requests, such as those associated with larger documents will be provided as quickly as possible and could take up to three weeks. Requests may be made by calling (856) 794-1941, or by completing a request form available at www.sjtpo.org/TitleVI. Any person who believes they have been aggrieved by an unlawful discriminatory practice by SJTPO under Title VI has a right to file a formal complaint. Any such complaint must be in writing and filed with SJTPO's Title VI Compliance Manager and/or the appropriate state or federal agency within 180 days of the alleged discriminatory occurrence. For more information on SJTPO Title VI program or to obtain a Title VI Complaint Form, please visit: www.sjtpo.org/TitleVI, call (856) 794-1941, or email TitleVI@sjtpo.org.

The preparation of this report has been funded in part by the U.S. Department of Transportation, Federal Transit Administration and Federal Highway Administration. This document is disseminated under the sponsorship of the U.S. Department of Transportation in the interest of information exchange. The United States Government assumes no liability for its contents or its use thereof.

Content

Overview of the Transportation Improvement Program 5

Components of the TIP 6

Relationship to the Regional Transportation Plan..... 8

Development of the TIP 8

Project Funding 10

Regional Highway Projects & Programs..... 14

NJDOT Statewide Projects & Programs 22

NJ TRANSIT Projects & Programs 30

Acronym Guide 33

Figures

Figure 1: TIP Project Types..... 5

Figure 2: STBGP Areas in the Four-County SJTPO Region..... 11

Overview of the Transportation Improvement Program

The TIP is a federally required document, updated every two years, which details all federal and state-funded surface transportation projects and programs over a specified time. The TIP, which SJTPO also refers to as "the list of projects," includes regional highway projects and programs, as well as Statewide projects and programs to be advanced by the New Jersey Department of Transportation (NJDOT) and the New Jersey Transit (NJ TRANSIT).

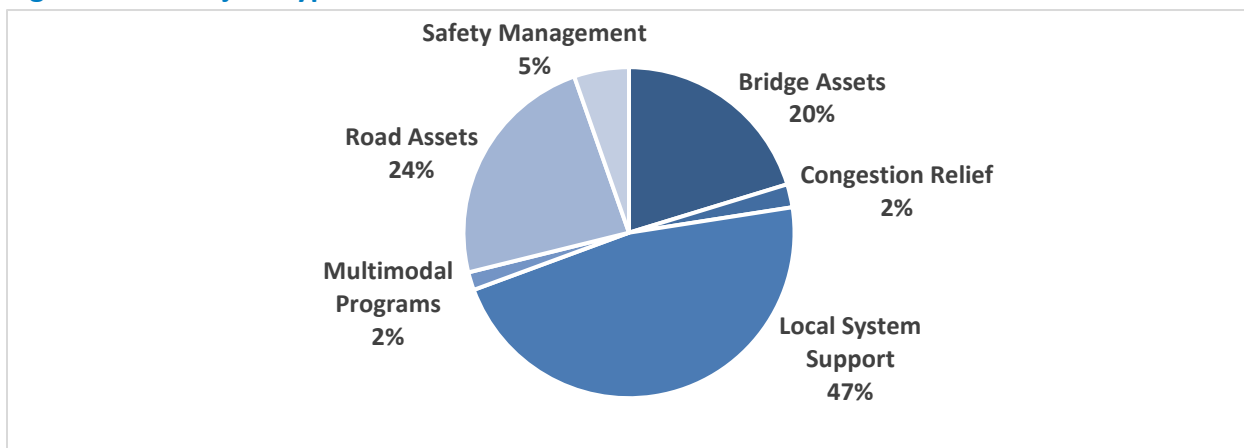
SJTPO's current TIP is for Federal Fiscal Years (FFYs) 2024 to 2033, effective from October 1, 2023, through September 30, 2033. Whereas the TIP includes a list of projects and programs for ten years, the first four years (FFY 2024 - 2027) represent the "fiscally constrained TIP," with the remaining six years (FFY 2028 - 2033) displayed as informational years.

	Full TIP	Fiscally Constrained Portion	Informational Portion
Federal Fiscal Year	FFY 2024 - 2033	FFY 2024 - 2027	FFY 2028 - 2033
Number of Years	10	4	6
Effective Dates	October 1, 2023 – September 30, 2033	October 1, 2023 – September 30, 2027	October 1, 2027 – September 30, 2033

SJTPO's TIP compliments the Statewide Transportation Improvement Program (STIP) for the State of New Jersey, which includes the TIPs from all three MPOs in New Jersey: SJTPO, DVRPC, and NJTPA. The STIP is a comprehensive, one-volume guide to significant transportation improvements planned in New Jersey.

There are various project types in the TIP, including Local Systems Support, Mass Transit Assets, Road Assets, and Congestion Relief. [Figure 1](#) shows the types of projects in the TIP, accounting for projects led by various agencies, including NJDOT, NJ TRANSIT, or other counties/municipal partners.

Figure 1: TIP Project Types



Components of the TIP

Consistent with federal regulation, the TIP must include all regionally significant projects receiving FHWA or FTA funds or for which FHWA or FTA approval is required, in addition to non-federally funded projects consistent with the RTP. All surface transportation projects and other transportation-related improvements within the SJTPO region are included as Regional Highway, NJDOT, and NJ TRANSIT Projects and Programs. Federal regulations additionally require the TIP to be "fiscally constrained." This requirement is met through preparing a financial plan, which is a second key component of the TIP.

The four-county SJTPO region is designated as a nonattainment area under the 8-Hour Ozone National Ambient Air Quality Standards (NAAQS), which requires a formal evaluation and analysis. This air quality analysis is another component of the TIP.

Financial Plan

Federal planning regulations require the TIP to contain a financial plan that demonstrates how the TIP will be implemented. The TIP must include sufficient financial information to demonstrate that projects in the document can be implemented using committed, available, or reasonably available revenue sources, with reasonable assurance that the federally supported transportation system is adequately operated and maintained. The TIP includes all regionally significant projects receiving Federal Highway Administration (FHWA) or Federal Transit Administration (FTA) funds or for which FHWA or FTA approval is required.

It must indicate the resources from public and private sources that are reasonably expected to be made available and any recommendations for innovative financing techniques to fund needed projects and programs. Following the requirements of federal legislation, federal expenditures in the first four years of the TIP (FFY 2024–2027) are strictly constrained to expected funding.

SJTPO's ten-year TIP (FFY 2024–2033) represents a joint commitment between NJDOT, NJ TRANSIT, and SJTPO to provide funding for specifically identified projects and programs within the region and participate in the Statewide programs. The ten-year TIP is based on an explicit set of Statewide financial assumptions to comply with federal guidelines.

The budgeting of federal and state funds for projects within New Jersey is a product of the development of the annual Capital Program, the three regional TIPs, and the STIP. Statewide, the cost of projects programmed for a State Fiscal Year (FY) (July 1 to June 30) must equal the planned resources for that year. These programming decisions are made cooperatively with the participation of NJDOT, NJ TRANSIT, local government representatives, other agencies (all members of the MPOs), the State Legislature, and the public.

Air Quality Analysis

The entire four-county SJTPO region falls within the Philadelphia-Wilmington-Atlantic City, PA-NJ-MD-DE Marginal 8-Hour Ozone Nonattainment Area. As such, all projects within the TIP, regardless of funding source or the project sponsor, are reviewed for their effect on air quality and, consequently, their degree of conformity to air quality standards established by the United States Environmental Protection Agency (US EPA). Transportation Conformity, as the process is formally known, is demonstrated when future planned, federally funded highway and transit projects are determined not to cause new air quality violations, worsen existing violations, or delay the timely attainment of the NAAQS. Conformity findings must also be based on established budgets for "the ozone precursors" pollutants – volatile organic compounds (VOCs) and oxides of nitrogen (NOx) – for all applicable analysis years in the MPO region of the designated nonattainment area.

The Transportation Conformity document aims to demonstrate the conformity of the FFY 2024-2033 TIP and the RTP with the 8-hour Ozone National Ambient Air Quality Standards (NAAQS). Consistent with the requirements for nonattainment areas and through the Transportation Conformity determination, SJTPO has demonstrated that the projects and programs within the FFY 2024-2033 TIP and the current Regional Transportation Plan, [RTP 2050](#), will continue to meet the 2015 8-Hour Ozone Standards National Ambient Air Quality Standards (NAAQS) and conforms to the State Implementation Plan (SIP).

Adoption of the Transportation Conformity finding is considered along with the TIP. With this approval, the Transportation Conformity finding becomes part of the approved TIP.

Performance-Based Planning

The transportation funding bills govern federal surface transportation spending and require State DOTs and MPOs to establish and use a performance-based approach to transportation decision-making. This includes tracking performance measures, setting data-driven targets for each measure, and selecting projects to help meet those targets.

The FHWA Performance-Based Planning and Programming (PBPP) aims to ensure targeted investment of federal transportation funds by increasing accountability and transparency and providing better investment decisions focusing on key outcomes related to seven national goals associated with the three Performance Measures (PM) listed below.

Performance Measure 1 - Safety Performance

1. Safety

Performance Measure 2 - Pavement and Bridge Condition Performance

2. Infrastructure Preservation

Performance Measure 3 - Travel Time and Freight Reliability Performance

3. Congestion Reduction
4. System Reliability
5. Freight Movement and Economic Vitality
6. Environmental Sustainability
7. Reduced Project Delivery Delays

Relationship to the Regional Transportation Plan

The RTP is the guiding document for the TIP. Not all federally funded projects included in the RTP will be included in the TIP, whereas all federally funded projects in the TIP must be included in the RTP. Each project or phase included in the TIP must be consistent with the approved RTP.¹ To maintain consistency between both documents, the RTP will first be revised whenever a revision to the TIP is required, following the Memorandum of Understanding established for TIP/STIP Revisions and an RTP Tracker will be maintained. The tracker will be posted to SJTPO's website (www.sjtpo.org/rtp) to provide clarity and transparency related to revisions to the RTP document.

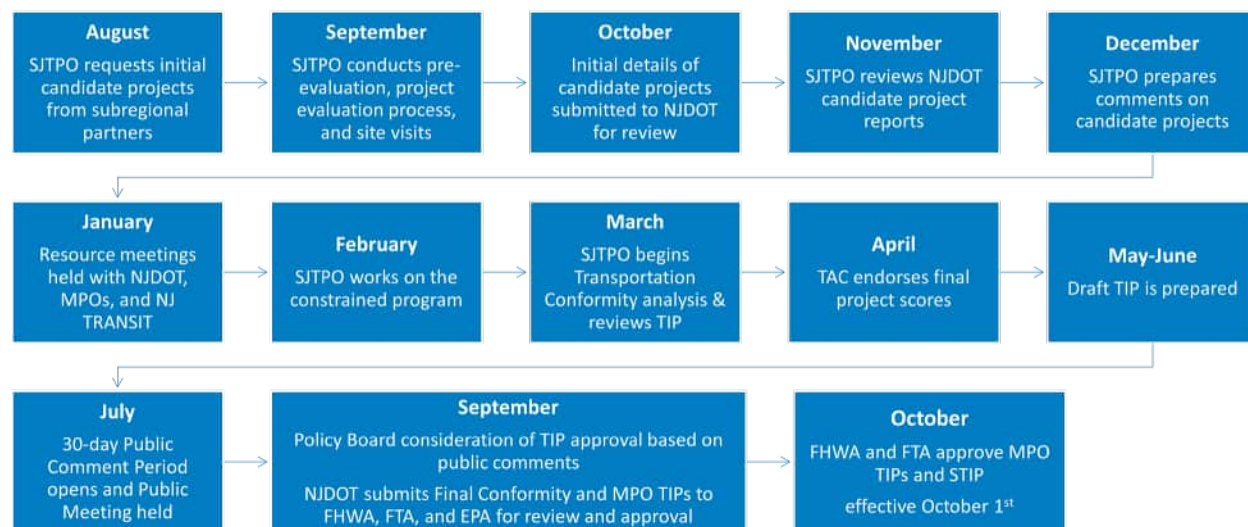
RTP 2050 serves as the long-range RTP for the SJTPO region and guides the region's transportation decision-making for the next 20+ years through the horizon year of 2050. *RTP 2050* identifies the region's long-term needs and the projects and activities which seek to address them. Much like the TIP, only transportation projects in the RTP are eligible for federal funding. *RTP 2050* also includes a comprehensive review of current transportation resources in South Jersey. It includes highways, transit, bicycle, pedestrian, and intermodal facilities. For each travel mode, the travel demand is reviewed, needs are assessed, and opportunities and strategies for improvement are discussed. In addition, the RTP guides the TIP project selection process, which supports SJTPO's ten regional goals.

Development of the TIP

While the TIP is effective October 1, the development process begins 12 to 15 months before adoption. The graphic below illustrates the process from the initial request of basic project information from subregional planning partners to the adoption of the planning document by the Policy Board in September 2023.

Following the document's approval, SJTPO continues collaborating with state and subregional partners to track project status and aid with the federal authorization process.

¹ As specified in 23 Code of Federal Regulations (CFR) 450.306 (i).



Project Evaluation

SJTPO has a Project Evaluation Process and ranking system that is used when needed to evaluate locally-led projects from a regional perspective. The process focuses on two essential elements – project pre-evaluation screening and specific categories of significance to the SJTPO region. The Project Pre-Evaluation Screening process evaluates projects not only passively to assess the quality of the projects but also actively encourage improvements to projects to better align with regional, state, and federal guidelines and priorities, such as safety, Complete Streets, Environmental Justice (EJ), Freight Considerations, and air quality, among others. The project ranking system assigns a numeric point value to each potential project based on the degree to which it satisfies the various criteria.

The project's final scores influence the amount of funding it may receive. For projects other than Local Lead projects using other funding sources, the Project Evaluation Process may differ based on the nature of the funding. Projects that meet specific criteria may qualify for funding from another SJTPO program, such as the Highway Safety Improvement Program (HSIP) funded SJTPO Local Safety Program, CMAQ, CRP, Transportation Alternatives (TA) Set-Aside Program, and Safe Routes to School (SRTS) Program.

Public Involvement Process

When the Draft TIP and Transportation Conformity are prepared, SJTPO begins a public involvement process to ensure that residents, regional stakeholders, affected agencies, employees, private transportation providers, and other interested parties can comment on the proposed program. During the comment period, the Draft TIP and Transportation Conformity are available on the SJTPO website (www.sjtpo.org/TIP).

As one of SJTPO's major planning documents, the TIP requires a minimum 30-day public comment period, during which at least one public meeting is held. The public comment period and public meeting are held jointly for SJTPO's TIP and the relevant portion of the Statewide TIP in the SJTPO region. NJDOT and NJ TRANSIT do not hold meetings separately for their statewide projects or programs.

Revision Process

Although a new TIP is developed every two years, the TIP is updated as needed through a modification and amendment process. Once the TIP is adopted by the SJTPO Policy Board, approved by the state, and the STIP is approved by the federal government, specific procedures are established for making changes to the TIP. These procedures are specifically outlined in a joint [Memorandum of Understanding \(MOU\)](#) between DVRPC, NJTPA, SJTPO, NJ TRANSIT, and NJDOT. The MOU establishes a set of procedures to be used for processing and implementing revisions to the three TIP documents from the three MPOs and to the STIP.²

Project Funding

The TIP includes state and local highway projects and regional, statewide, and transit programs. Over \$1.5 Billion of FFY 2024-2033 federal and state funding is identified for transportation improvements within the four counties and participation in the statewide programs.

Funding Sources

FHWA and FTA are the primary funding sources for projects in the TIP. In addition, the State of New Jersey provides funds through appropriations and the Transportation Trust Fund (TTF) that have been used to fund selected projects. Potential project funding sources include counties, municipalities, private developers, toll road authorities, and transit operators. Projects are funded through various sources, depending upon the type of work to be completed.

Funding Available through SJTPO

The primary funding source for federally funded projects that SJTPO's county partners initiate is the Surface Transportation Block Grant Program (STBGP). These projects are often referred to as Local Lead projects since the county serves as the project sponsor and is the responsible agency for moving the project through the project delivery process. The STBGP funding may be used on highway, bridge, or transit capital projects, planning and research programs, and various other eligible project types.

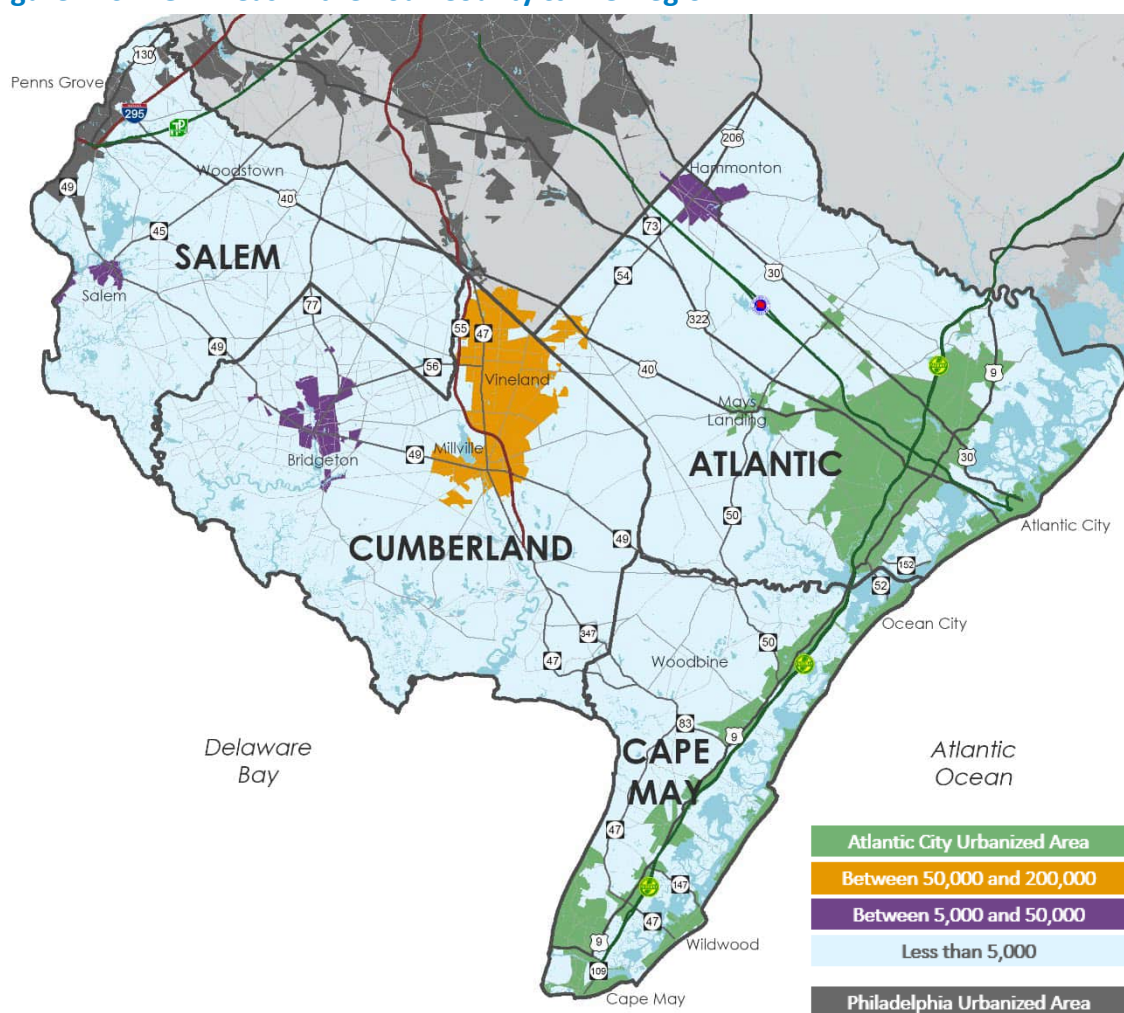
² As specified in 23 Code of Federal Regulations (CFR) Part 450.

STBGP funding is suballocated to areas of New Jersey based on their relative share of the state's population. The four STBGP funding categories available for use in the SJTPO region are:

- **STBGP-AC:** explicitly designated to the Atlantic City Urbanized Area (AC UZA) with a population equal to or greater than 200,000 persons
- **STBGP-B50K200K:** areas with a population between 50,000 and 200,000 persons
- **STBGP-B5K50K:** areas with a population between 5,000 and 50,000 persons
- **STBGP-L5K:** areas with a population of less than 5,000 persons

[Figure 2](#) shows the four categories of STBGP funding received by SJTPO following the surrounding population area where these funds are eligible to be spent.

Figure 2: STBGP Areas in the Four-County SJTPO Region

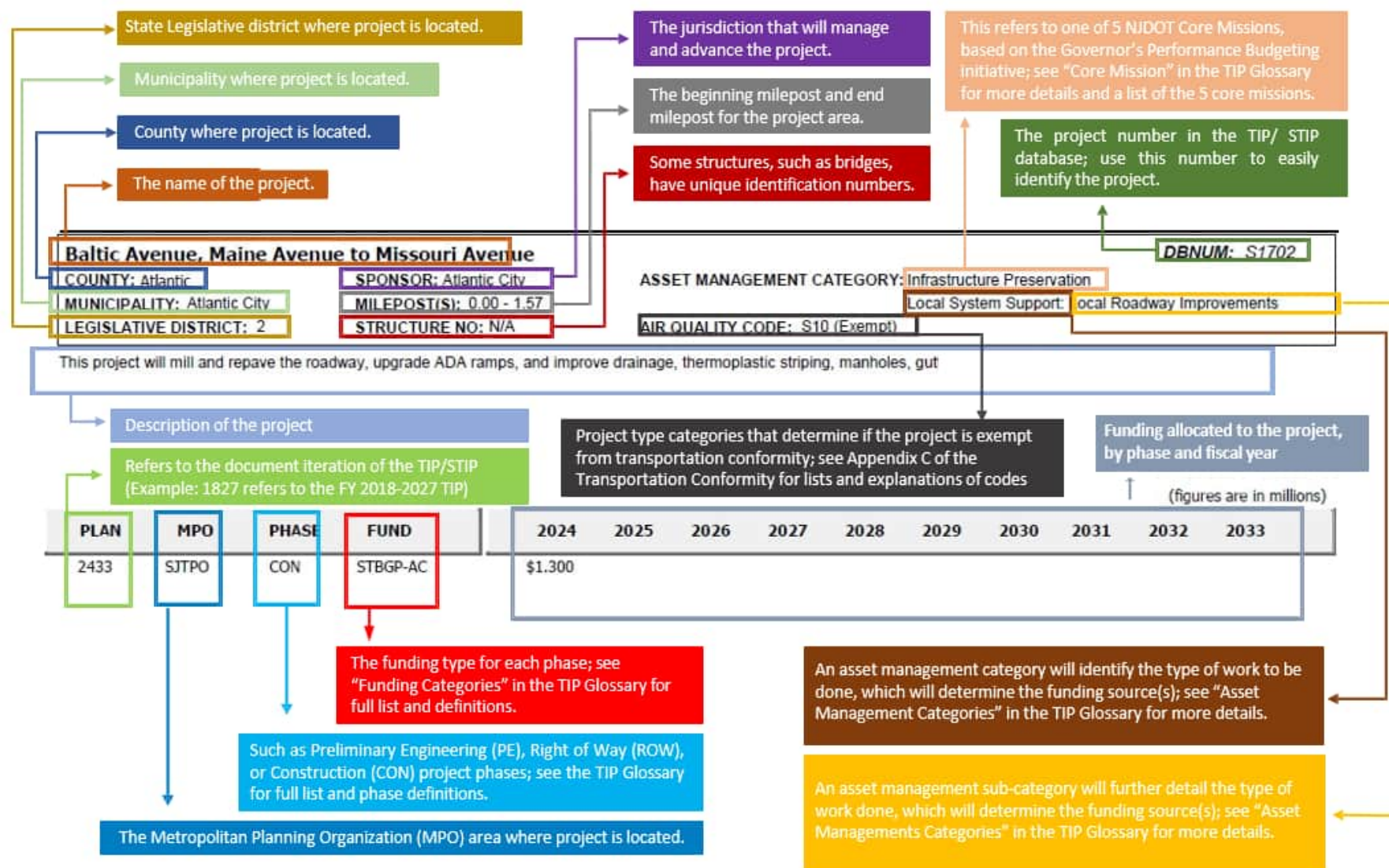


(Locally Lead), and programs sponsored by NJDOT, noting Local Lead as the project sponsor. The NJDOT Statewide Projects/Programs section includes various projects or programs funded Statewide, with the funding listed in the TIP explicitly allocated to the SJTPO region. As the name implies, the NJ TRANSIT Projects/Programs section includes all projects or programs led by NJ TRANSIT, with the listed funding allocated explicitly to the SJTPO region.

The majority of the TIP document includes information and details related to the project and programs to be advanced in the SJTPO region, known as TIP Project Sheets. For ease and quick reference, summary tables of the projects in each section are provided. Across the project row are details on the sponsor of the project, where it is located, what MPO it falls under, the phase it is in (as of TIP publication), the funding source, and the funding amounts for the year (FFY 2024-2033).

Following the summary table are TIP Project Sheets with further details about each project, listed individually. This includes more information not provided in the summary table, including a project description, asset management category, air quality code, phase cost breakdowns, and any notes on the project. The graphic on the following page can be used as a guide for reading and understanding a TIP Project Sheet.

Understanding the Project TIP Sheet



Regional Highway Projects & Programs

DBNUM	PROJECT NAME	COUNTY	SPONSOR	MUNICIPALITY	FUND	PHASE	2024	2025	2026	2027	2028	2029	2030	2031	2032	2033	TOTAL
15420A	ADA South, Contract 1 with ROW	Atlantic	NJDOT	Galloway Twp	NHPP	CON	\$4.300										\$4.300
16322	ADA South, Contract 5	Atlantic	NJDOT	Galloway Twp	STBGP-FLEX	CON	\$3.200										\$3.200
S1702	Baltic Avenue, Maine Avenue to Missouri Avenue	Atlantic	Atlantic City	Atlantic City	STBGP-AC	CON	\$1.300	\$0.800									\$2.100
S2102	California Avenue (CR 663)	Atlantic	Atlantic County	Absecon City	STBGP-AC	CON	\$2.000										\$2.000
S2401	Chestnut Avenue Safety Improvements and Rehabilitation	Cumberland	City of Vineland	City of Vineland	SS4A-VINELAND	CON		\$24.221	\$0.597								\$24.818
					SS4A-VINELAND	DES	\$0.076										\$0.076
					SS4A-VINELAND	PE	\$0.227										\$0.227
S2111	Commissioners Pike (CR 581)	Salem	Salem County	Alloway Twp	STBGP-L5K	CON						\$1.500					\$1.500
					STBGP-L5K	DES			\$0.150								\$0.150
					STBGP-L5K	PE		\$0.050									\$0.050
S1403	Cumberland County Federal Road Program	Cumberland	Cumberland County	Various	STBGP-B50K200K	CON			\$2.300	\$2.300	\$2.300						\$6.900
					STBGP-B5K50K	CON	\$2.300										\$2.300
					STBGP-L5K	CON		\$2.300									\$2.300
S2106	East Mill Creek Road (CR 670/US 347), Phase I	Cape May	Cape May County	Dennis Twp	STBGP-L5K	CON	\$1.000										\$1.000
S2107	East Mill Creek Road (CR 670/US 347), Phase II	Cape May	Cape May County	Dennis Twp	STBGP-L5K	CON		\$1.500									\$1.500
S1903	Griffith Street/Grant Street (CR 657)	Salem	Salem County	Salem City	STBGP-B5K50K	CON			\$0.600								\$0.600

S2306	Jerome Avenue, Ventnor Avenue (CR 629) to Beach Thorofare Bridge	Atlantic	Atlantic County	Margate	STBGP-AC	CON					\$3.000						\$3.000
S2310	Kings Highway (CR 608), Route 83 to CR 628	Cape May	Cape May County	Dennis Twp	STBGP-AC	CON						\$0.990					\$0.990
S2301	Kings Highway (CR 620)	Salem	Salem County	Pilesgrove Twp	STBGP-L5K	CON								\$1.500			\$1.500
					STBGP-L5K	DES					\$0.150						\$0.150
					STBGP-L5K	PE				\$0.050							\$0.050
X065	Local CMAQ Initiatives	Various	Local Lead	Various	CMAQ	EC	\$1.655	\$1.833	\$1.900	\$1.900	\$1.900	\$1.900	\$1.900	\$1.900	\$1.900	\$1.900	\$18.687
X41A1	Local County Aid, SJTPO	Various	Local Lead	Various	STATE	ERC	\$22.801	\$21.000	\$21.000	\$21.000	\$21.000	\$21.000	\$21.000	\$21.000	\$21.000	\$21.000	\$211.801
X98A1	Local Municipal Aid, SJTPO	Various	Local Lead	Various	STATE	ERC	\$13.326	\$12.000	\$12.000	\$12.000	\$12.000	\$12.000	\$12.000	\$12.000	\$12.000	\$12.000	\$121.326
4314	Local Safety/ High Risk Rural Roads Program	Various	Local Lead	Various	HSIP	ERC	\$3.000	\$3.000	\$3.000	\$3.000	\$3.000	\$3.000	\$3.000	\$3.000	\$3.000	\$3.000	\$30.000
S2101	Martin Luther King Jr. Boulevard (Mediterranean Avenue to Route 30)	Atlantic	Atlantic City	Atlantic City	STBGP-AC	CON			\$1.450								\$1.450
X30A	Metropolitan Planning	Various	MPO	Various	PL	PLS	\$1.083	\$1.105	\$1.127	\$1.149	\$1.172	\$1.196	\$1.220	\$1.244	\$1.269	\$1.294	\$11.859
					PL-FTA	PLS	\$0.465	\$0.474	\$0.487	\$0.496	\$0.506	\$0.515	\$0.525	\$0.535	\$0.544	\$0.554	\$5.101
					STBGP-AC	PLS		\$0.265			\$0.265		\$0.265		\$0.265		\$1.060
					STBGP-L5K	PLS	\$0.265		\$0.265			\$0.265		\$0.265		\$0.265	\$1.325
S2315	Mill Road, Forest Grove Road to Gallagher Drive	Cumberland	City of Vineland	City of Vineland	STBGP-B50K200K	CON					\$1.900						\$1.900
					STBGP-B50K200K	DES				\$0.075							\$0.075
					STBGP-B50K200K	PE			\$0.075								\$0.075
S2316	Mill Road, Gallagher Drive to Weymouth Road	Cumberland	City of Vineland	City of Vineland	STBGP-B50K200K	CON						\$1.500					\$1.500
					STBGP-B50K200K	DES					\$0.075						\$0.075

					STBGP-B50K200K	PE				\$0.075							\$0.075
S2317	Mill Road, Garden Road (CR 674) to Forest Grove Road	Cumberland	City of Vineland	City of Vineland	STBGP-B50K200K	CON				\$1.200							\$1.200
					STBGP-B50K200K	DES			\$0.075								\$0.075
					STBGP-B50K200K	PE		\$0.075									\$0.075
					STBGP-B50K200K	PE		\$0.075									\$0.075
S2303	New Hampshire Avenue, Parkside Avenue to Pacific Avenue	Atlantic	Atlantic city	Atlantic City	STBGP-AC	CON					\$1.800						\$1.800
S2311	Ocean Drive (CR 619), 99th Street South to Great Channel Bridge (0500-028)	Cape May	Cape May County	Stone Harbor	STBGP-AC	CON					\$2.450						\$2.450
S2105	Ohio Avenue (CR 630)	Atlantic	Atlantic County	Absecon City	STBGP-AC	CON	\$1.000										\$1.000
S2113	Ohio Avenue, Bacharach Boulevard to Atlantic Avenue	Atlantic	Atlantic City	Atlantic City	STBGP-AC	CON				\$0.800							\$0.800
S2305	Pacific Avenue, Massachusetts Avenue to New Hampshire Avenue	Atlantic	Atlantic City	Atlantic City	STBGP-AC	CON				\$0.650							\$0.650
S1716	Park Avenue, NW Boulevard to West Avenue	Cumberland	Vineland City	Vineland City	STBGP-B5K50K	CON		\$1.150									\$1.150
S1902	Park Avenue/Quigley Avenue (CR 540)	Cumberland	Vineland City	Vineland City	STBGP-B5K50K	CON	\$2.050										\$2.050
X51	Pavement Preservation	Various	NJDOT	Various	NHPP	ERC	\$10.000	\$10.000	\$10.000	\$2.000	\$2.000	\$2.000	\$2.000	\$2.000	\$2.000	\$2.000	\$44.000
					STBGP-FLEX	ERC	\$6.000	\$5.000	\$5.000	\$0.500	\$0.500	\$0.500	\$0.500	\$0.500	\$0.500	\$0.500	\$19.500
S2307	Philadelphia Avenue (CR 563)	Atlantic	Atlantic County	Egg Harbor City	STBGP-AC	CON			\$3.000								\$3.000
S2112		Salem	Salem County	Salem City	STBGP-L5K	CON					\$1.500						\$1.500

	Quaker Neck Road (CR 657) Phase II				STBGP-L5K	DES		\$0.150									\$0.150
					STBGP-L5K	PE	\$0.080										\$0.080
X35A1	Rail-Highway Grade Crossing Program, Federal	Various	NJDOT	Various	RHC	EC	\$0.275	\$0.275	\$0.275	\$0.275	\$0.275	\$0.275	\$0.275	\$0.275	\$0.275	\$0.275	\$2.747
S2318	Reconstruction of South East Avenue	Cumberland	City of Vineland	City of Vineland	STBGP-B50K200K	CON			\$1.600								\$1.600
					STBGP-B50K200K	DES		\$0.075									\$0.075
					STBGP-B50K200K	PE	\$0.075										\$0.075
S2312	Roosevelt Boulevard (CR 623)	Cape May	Cape May County	Upper Twp	STBGP-L5K	CON				\$2.000							\$2.000
15397	Route 9, Atkinson Avenue to Bayview Drive	Atlantic	NJDOT	Somers Point City	NHPP	CON	\$10.250										\$10.250
19369	Route 9, Chapman Blvd to Route 30 (Whitehorse Pike)	Atlantic	NJDOT	Linwood City	NHPP	CON										\$121.500	\$121.500
					NHPP	DES			\$8.250								\$8.250
					NHPP	PE	\$6.750										\$6.750
					NHPP	ROW				\$12.000							\$12.000
15400A	Route 9, Tuckahoe Rd (CR 631) to Roosevelt Blvd (CR 623)	Cape May	NJDOT	Upper Twp	NHPP	CON							\$5.950				\$5.950
					NHPP	DES			\$1.500								\$1.500
					NHPP	ROW				\$1.500							\$1.500
14428	Route 30, Bridge over Duck Thorofare	Atlantic	NJDOT	Atlantic City	BFP	DES	\$2.200										\$2.200
					NHPP	CON						\$23.950					\$23.950
16350	Route 30, Bridge over Newfound Thorofare	Atlantic	NJDOT	Atlantic City	BFP	ROW		\$0.375									\$0.375
					NHPP	CON						\$45.500					\$45.500
17504	Route 30, Somerdale Road (CR 678)	Camden	NJDOT	Somerdale Boro	STBGP-FLEX	CON						\$5.650					\$5.650
					STBGP-FLEX	DES		\$2.000									\$2.000
					STBGP-FLEX	ROW			\$1.300								\$1.300
8371		Atlantic	NJDOT		NHPP	CON	\$23.200										\$23.200

	Route 40, Atlantic County, Drainage			Egg Harbor Twp	RAISE	CON	\$20.000										\$20.000
15370	Route 40, Hamilton Common Drive to West End Avenue (CR 629)	Atlantic	NJDOT	Hamilton Twp	NHPP	CON	\$30.925										\$30.925
196A5	Route 40/322, Median Closures, Oakcrest Avenue to Spencer Avenue	Atlantic	NJDOT	Hamilton Twp	NHPP	CON					\$8.000						\$8.000
					NHPP	DES	\$2.500										\$2.500
					NHPP	ROW			\$4.000								\$4.000
17303	Route 47, Bridge over Dennis Creek	Cape May	NJDOT	Dennis Twp	BFP	DES		\$2.600									\$2.600
					NHPP	CON							\$11.250				\$11.250
					NHPP	ROW			\$0.300								\$0.300
16346	Route 47, Bridge over Menantico Creek	Cumberland	NJDOT	Maurice River Twp	BFP	CON		\$16.400									\$16.400
					BFP	UTI	\$0.700										\$0.700
15340	Route 47, Henderson Avenue to High Street	Cumberland	NJDOT	Millville City	NHPP	CON							\$10.900				\$10.900
					NHPP	DES		\$1.100									\$1.100
					NHPP	ROW			\$1.800								\$1.800
12320	Route 47, Nummytown Mill Pond Dam	Cape May	NJDOT	Middle Twp	NHPP	CON							\$10.450				\$10.450
					NHPP	DES		\$2.600									\$2.600
					NHPP	ROW			\$2.000								\$2.000
15314	Route 49, Bridge over Maurice River	Cumberland	NJDOT	Millville City	BFP	CON	\$16.200										\$16.200
17329	Route 50, Bridge over Cedar Swamp Creek	Cape May	NJDOT	Upper Twp	STBGP- FLEX	CON			\$35.800								\$35.800
15379	Route 54, Atlantic City Expressway to Rt 30 (Whitehorse Pike)	Atlantic	NJDOT	Buena Boro	NHPP	CON	\$11.900										\$11.900

17306	Route 55, Bridges over Route 47	Cumberland	NJDOT	Millville City	BFP	DES	\$2.500										\$2.500
					NHPP	CON				\$22.300							\$22.300
18311	Route 9, Garden State Parkway to CR 559 (Mays Landing Road)	Atlantic	NJDOT	Somers Point City	DEMO-R	CON				\$0.822							\$0.822
					NHPP	CON				\$7.978							\$7.978
					NHPP	DES	\$2.300										\$2.300
					NHPP	ROW		\$0.500									\$0.500
16334	Route 295 SB Ramp K to CR 551, Bridge over Route 295 SB	Salem	NJDOT	Carney's Point Twp	BFP	DES		\$2.600									\$2.600
					NHPP	CON							\$9.500				\$9.500
					NHPP	ROW			\$1.000								\$1.000
15448	Route 322, Bridge over Great Egg Harbor River	Atlantic	NJDOT	Hamilton Twp	BFP	ROW		\$0.360									\$0.360
					NHPP	CON					\$14.450						\$14.450
S2108	Seashore Road Phase 1 Resurfacing (CR 626) from Breakwater Road (CR 613) to U.S. Route 47	Cape May	Cape May County	Middle Twp	STBGP- B5K50K	CON	\$2.000										\$2.000
S2109	Seashore Road Phase 2 Resurfacing (CR 626) from Breakwater Road (CR 613) to Tabernacle Road (CR 647)	Cape May	Cape May County	Lower Twp	STBGP- B5K50K	CON		\$1.600									\$1.600
S2117	Seashore Road Phase 3 resurfacing (C.R. 626) from Sandman Boulevard (U.S Route 9) to Tabernacle Road (C.R. 647)	Cape May	Cape May County	Lower Twp	STBGP- B5K50K	CON			\$2.422								\$2.422
S2308	Second Road & Chew Road (CR 559), 7th Street to 12th Street	Atlantic	Atlantic County	Hammonton	STBGP- B5K50K	CON					\$3.000						\$3.000

S2313	Shunpike Road (CR 620), Oyster Road to Dias Creek Road (CR 612)	Cape May	Cape May County	Middle Twp	STBGP-B50K200K	CON					\$1.300						\$1.300
S2319	SJTPO Carbon Reduction Program	Various	SJTPO	Various	CR-AC	ERC	\$0.567	\$0.579	\$0.590	\$0.602	\$0.614	\$0.626	\$0.639	\$0.652	\$0.665	\$0.678	\$6.211
S044	SJTPO, Future Projects	Various	SJTPO	Various	STBGP-AC	ERC	\$0.012	\$0.033	\$0.036	\$0.126	\$0.152	\$3.771	\$4.591	\$4.953	\$4.787	\$5.153	\$23.613
					STBGP-B50K200K	ERC	\$0.226	\$0.011	\$0.084	\$0.062	\$0.006	\$2.260	\$4.288	\$4.244	\$5.320	\$5.280	\$21.780
					STBGP-B5K50K	ERC	\$0.062	\$0.003	\$0.023	\$0.017	\$0.002	\$0.616	\$1.169	\$1.158	\$1.451	\$1.440	\$5.940
					STBGP-L5K	ERC	\$0.122	\$0.006	\$0.046	\$0.031	\$0.003	\$1.233	\$2.339	\$2.315	\$2.902	\$2.880	\$11.876
S2309	Somers Point - Mays Landing (CR 559); Pitney Road (CR 634)	Atlantic	Atlantic County	Egg Harbor Twp	STBGP-AC	CON		\$2.650									\$2.650
9361	South Inlet Transportation Improvement Project	Atlantic	SJTA/CRDA	Atlantic City	STATE	CON	\$1.500	\$1.500	\$1.500	\$1.500	\$1.500	\$1.500	\$1.500	\$1.500	\$1.500	\$1.500	\$15.000
S1908	Telegraph Road (CR 540), Phase 2	Salem	Salem	Quinton Twp	STBGP-B5K50K	CON		\$1.500									\$1.500
S2115	Tennessee Avenue, Atlantic Avenue to Pacific Avenue	Atlantic	Atlantic City	Atlantic City	STBGP-AC	CON		\$0.650									\$0.650
S2314	Townbank Road (CR 648), Clubhouse Drive to Bayshore Road (CR 603)	Cape May	Cape May County	Lower Twp	STBGP-B50K200K	CON						\$1.740					\$1.740
X107	Transportation Alternatives Program	Various	NJDOT	Various	TA-AC	ERC	\$0.543	\$0.554	\$0.566	\$0.578	\$0.590	\$0.603	\$0.616	\$0.629	\$0.642	\$0.655	\$5.976
S2302	Walnut Street (CR 665)	Salem	Salem County	Salem City	STBGP-B5K50K	CON							\$1.500				\$1.500
					STBGP-B5K50K	DES				\$0.150							\$0.150
					STBGP-B5K50K	PE			\$0.050								\$0.050

S9912	Welchville Road (CR 540)	Salem	Salem	Alloway Twp	STBGP- L5K	CON			\$0.900								\$0.900
S1904	Willow Grove Road (CR 639); Perkintown Road (CR 644)	Salem	Salem County	Oldsmans Twp	STBGP- L5K	CON				\$1.500							\$1.500
					STBGP- L5K	DES	\$0.075										\$0.075

NJDOT Statewide Projects & Programs

DBNUM	PROJECT NAME	COUNTY	SPONSOR	MUNICIPALITY	FUND	PHASE	2024	2025	2026	2027	2028	2029	2030	2031	2032	2033	TOTAL
X12	Acquisition of Right of Way	Various	NJDOT	Various	STATE	ROW	\$0.600	\$0.600	\$0.600	\$0.600	\$0.600	\$0.600	\$0.600	\$0.600	\$0.600	\$0.600	\$6.000
11344	ADA Curb Ramp Implementation	Various	NJDOT	Various	STATE	ERC	\$0.030	\$0.030	\$0.030	\$0.030	\$0.030	\$0.030	\$0.030	\$0.030	\$0.030	\$0.030	\$0.300
					STBGP-FLEX	ERC	\$1.000	\$1.000	\$1.000	\$1.000	\$1.000	\$1.000	\$1.000	\$1.000	\$1.000	\$1.000	\$10.000
19315	Aeronautics and UAS Program	Various	NJDOT	Various	STATE	ERC	\$0.500	\$0.500	\$0.500	\$0.500	\$0.500	\$0.500	\$0.500	\$0.500	\$0.500	\$0.500	\$5.000
8415	Airport Improvement Program	Various	NJDOT	Various	STATE	ERC	\$4.000	\$4.000	\$4.000	\$4.000	\$4.000	\$4.000	\$4.000	\$4.000	\$4.000	\$4.000	\$40.000
1335	Betterments, Dams	Various	NJDOT	Various	STATE	EC	\$0.300	\$0.300	\$0.300	\$0.300	\$0.300	\$0.300	\$0.300	\$0.300	\$0.300	\$0.300	\$3.000
X72B	Betterments, Roadway Preservation	Various	NJDOT	Various	STATE	EC	\$18.000	\$18.000	\$18.000	\$18.000	\$18.000	\$18.000	\$18.000	\$18.000	\$18.000	\$18.000	\$180.000
X72C	Betterments, Safety	Various	NJDOT	Various	STATE	EC	\$16.000	\$16.000	\$16.000	\$16.000	\$16.000	\$16.000	\$16.000	\$16.000	\$16.000	\$16.000	\$160.000
X185	Bicycle & Pedestrian Facilities/ Accommodations	Various	NJDOT	Various	CMAQ	ERC	\$2.750	\$2.750	\$2.750	\$2.750	\$2.750	\$2.750	\$2.750	\$2.750	\$2.750	\$2.750	\$27.500
					STATE	ERC	\$1.000	\$1.000	\$1.000	\$1.000	\$1.000	\$1.000	\$1.000	\$1.000	\$1.000	\$1.000	\$10.000
					TA-FLEX	ERC	\$1.500	\$1.500	\$1.500	\$1.500	\$1.500	\$1.500	\$1.500	\$1.500	\$1.500	\$1.500	\$15.000
X07F	Bridge and Structure Inspection, Miscellaneous	Various	NJDOT	Various	STATE	EC	\$0.150	\$0.150	\$0.150	\$0.150	\$0.150	\$0.150	\$0.150	\$0.150	\$0.150	\$0.150	\$1.500
3304	Bridge Deck/Superstructure Replacement Program	Various	NJDOT	Various	BFP	ERC	\$0.684										\$0.684
					BFP-OS-BRDG	ERC	\$2.000	\$5.000	\$5.000								\$12.000
					NHPP	ERC	\$32.000	\$44.000	\$44.000	\$24.000	\$24.000	\$24.000	\$24.000	\$24.000	\$24.000	\$24.000	\$288.000
					STBGP-OS-BRDG	ERC	\$20.000	\$20.000	\$20.000	\$20.000	\$2.000	\$20.000	\$20.000	\$20.000	\$20.000	\$20.000	\$182.000
98315	Bridge Emergency Repair	Various	NJDOT	Various	STATE	EC	\$85.000	\$85.000	\$85.000	\$85.000	\$85.000	\$85.000	\$85.000	\$85.000	\$85.000	\$85.000	\$850.000
X07A	Bridge Inspection	Various	NJDOT	Various	NHPP	EC	\$15.000	\$15.000	\$15.000	\$15.000	\$15.000	\$15.000	\$15.000	\$15.000	\$15.000	\$15.000	\$150.000
					STBGP-FLEX	EC	\$8.580	\$8.580	\$8.580	\$8.580	\$8.580	\$8.580	\$8.580	\$8.580	\$8.580	\$8.580	\$85.800
					STBGP-OS-BRDG	EC	\$10.000	\$10.000	\$10.000	\$10.000	\$10.000	\$10.000	\$10.000	\$10.000	\$10.000	\$10.000	\$100.000

17341	Bridge Inspection Program, Minor Bridges	Various	NJDOT	Statewide	STATE	EC	\$8.800	\$8.800	\$8.800	\$8.800	\$8.800	\$8.800	\$8.800	\$8.800	\$8.800	\$8.800	\$88.000
14404	Bridge Maintenance and Repair, Movable Bridges	Various	NJDOT	Various	STATE	EC	\$25.000	\$25.000	\$25.000	\$25.000	\$25.000	\$25.000	\$25.000	\$25.000	\$25.000	\$25.000	\$250.000
17357	Bridge Maintenance Fender Replacement	Various	NJDOT	Various	NHPP	ERC	\$4.000	\$15.000	\$4.000	\$15.000	\$4.000	\$15.000	\$4.000	\$15.000	\$4.000	\$15.000	\$95.000
					STBGP-FLEX	ERC	\$1.000	\$5.000	\$1.000	\$5.000	\$1.000	\$5.000	\$1.000	\$5.000	\$1.000	\$5.000	\$30.000
17358	Bridge Maintenance Scour Countermeasures	Various	NJDOT	Various	NHPP	ERC	\$4.355	\$4.822	\$5.000	\$5.000	\$5.000	\$5.000	\$5.000	\$5.000	\$5.000	\$5.000	\$49.177
					STBGP-FLEX	ERC	\$3.484	\$3.858	\$4.000	\$4.000	\$4.000	\$4.000	\$4.000	\$4.000	\$4.000	\$4.000	\$39.342
x70	Bridge Management System	Various	NJDOT	Various	STBGP-FLEX	EC	\$1.500	\$1.500	\$1.500	\$1.500	\$1.500	\$1.500	\$1.500	\$1.500	\$1.500	\$1.500	\$15.000
13323	Bridge Preventive Maintenance	Various	NJDOT	Various	NHPP	EC	\$25.000	\$25.000	\$25.000	\$25.000	\$25.000	\$25.000	\$25.000	\$25.000	\$25.000	\$25.000	\$250.000
					STATE	EC	\$35.000	\$35.000	\$35.000	\$35.000	\$35.000	\$35.000	\$35.000	\$35.000	\$35.000	\$35.000	\$350.000
					STBGP-FLEX	EC	\$10.000	\$10.000	\$10.000	\$10.000	\$10.000	\$10.000	\$10.000	\$10.000	\$10.000	\$10.000	\$100.000
8381	Bridge Replacement, Future Projects	Various	NJDOT	Various	BFP-OS-BRDG	ERC	\$30.618	\$17.918	\$20.768	\$27.418							\$96.720
					HIP-BRR	ERC	\$13.275	\$13.275									\$26.549
					NHPP	ERC	\$6.754	\$13.770	\$34.212	\$15.281	\$12.143	\$8.915	\$17.753	\$18.633	\$30.345	\$18.022	\$175.828
					STATE	ERC	\$1.000	\$1.000	\$1.000	\$1.000	\$1.000	\$1.000	\$1.000	\$1.000	\$1.000	\$1.000	\$10.000
8381	Bridge Replacement, Future Projects	Various	NJDOT	Various	STBGP-OS-BRDG	ERC	\$30.961	\$32.180	\$33.424	\$34.692	\$35.986	\$37.306	\$38.652	\$40.025	\$41.426	\$42.854	\$367.508
98316	Bridge Scour Countermeasures	Various	NJDOT	Various	STATE	ERC	\$0.200	\$0.200	\$0.200	\$0.200	\$0.200	\$0.200	\$0.200	\$0.200	\$0.200	\$0.200	\$2.000
22352	Carbon Reduction Program	Various	NJDOT	Various	CR-B50K20 OK	ERC	\$0.139	\$0.142	\$0.146	\$0.149	\$0.073	\$0.077	\$0.081	\$0.085	\$0.090	\$0.095	\$1.078
					CR-B5K50K	ERC	\$0.458	\$0.467	\$0.477	\$0.486	\$0.496	\$0.506	\$0.516	\$0.526	\$0.537	\$0.548	\$5.018
					CR-FLEX	PLS	\$1.000	\$1.000	\$1.000	\$1.000	\$1.000	\$1.000	\$1.000	\$1.000	\$1.000	\$1.000	\$10.000
22352	Carbon Reduction Program	Various	NJDOT	Various	CR-L5K	ERC	\$1.122	\$1.145	\$1.167	\$1.191	\$1.215	\$1.239	\$1.264	\$1.289	\$1.315	\$1.341	\$12.286
22355	CMAQ Initiatives, Statewide	Various	NJDOT	Various	CMAQ	EC	\$12.000	\$4.000	\$14.500	\$16.750	\$10.550	\$0.250	\$0.250	\$0.250	\$0.250	\$6.000	\$64.800

2379	Congestion Relief, Intelligent Transportation System Improvements (Smart Move Program)	Various	NJDOT	Various	STATE	ERC	\$4.000	\$4.000	\$4.000	\$4.000	\$4.000	\$4.000	\$4.000	\$4.000	\$4.000	\$4.000	\$40.000
X180	Construction Inspection	Various	NJDOT	Various	STATE	EC	\$12.000	\$12.000	\$12.000	\$12.000	\$12.000	\$12.000	\$12.000	\$12.000	\$12.000	\$12.000	\$120.000
5304	Construction Program IT System (TRNS.PORT)	Various	NJDOT	Various	STATE	EC	\$5.400	\$5.400	\$5.400	\$5.400	\$5.400	\$5.400	\$5.400	\$5.400	\$5.400	\$5.400	\$54.000
9316	Culvert Replacement Program	Various	NJDOT	Various	STATE	ERC	\$4.000	\$4.000	\$4.000	\$4.000	\$4.000	\$4.000	\$4.000	\$4.000	\$4.000	\$4.000	\$40.000
					STBGP-FLEX	ERC	\$2.000	\$2.000	\$2.000	\$2.000	\$2.000	\$2.000	\$2.000	\$2.000	\$2.000	\$2.000	\$20.000
X142	DBE Supportive Services Program	Various	NJDOT	Various	STBGP-FLEX	EC	\$0.500	\$0.500	\$0.500	\$0.500	\$0.500	\$0.500	\$0.500	\$0.500	\$0.500	\$0.500	\$5.000
15322	Delaware & Raritan Canal Bridges	Mercer	NJDOT	Various	BFP-OS-BRDG	ERC	\$2.000	\$11.000	\$2.000								\$15.000
					STBGP-FLEX	ERC	\$5.000	\$5.000	\$5.000	\$5.000	\$5.000	\$5.000	\$5.000	\$5.000	\$5.000	\$5.000	\$50.000
					STBGP-OS-BRDG	ERC					\$9.000						\$9.000
X106	Design, Emerging Projects	Various	NJDOT	Various	STATE	DES	\$17.000	\$17.000	\$17.000	\$17.000	\$17.000	\$17.000	\$17.000	\$17.000	\$17.000	\$17.000	\$170.000
					STBGP-FLEX	DES	\$1.000	\$1.000	\$1.000	\$1.000	\$1.000	\$1.000	\$1.000	\$1.000	\$1.000	\$1.000	\$10.000
5342	Design, Geotechnical Engineering Tasks	Various	NJDOT	Various	STATE	DES	\$0.500	\$0.500	\$0.500	\$0.500	\$0.500	\$0.500	\$0.500	\$0.500	\$0.500	\$0.500	\$5.000
X197	Disadvantaged Business Enterprise	Various	NJDOT	Various	STBGP-FLEX	EC	\$0.250	\$0.250	\$0.250	\$0.250	\$0.250	\$0.250	\$0.250	\$0.250	\$0.250	\$0.250	\$2.500
X154D	Drainage Rehabilitation & Improvements	Various	NJDOT	Various	PFP	EC	\$23.000	\$23.000	\$23.000	\$23.000	\$23.000	\$23.000	\$23.000	\$23.000	\$23.000	\$23.000	\$230.000
X154	Drainage Rehabilitation and Maintenance, State	Various	NJDOT	Various	STATE	EC	\$20.000	\$20.000	\$20.000	\$20.000	\$20.000	\$20.000	\$20.000	\$20.000	\$20.000	\$20.000	\$200.000
22350	Electric Vehicle Infrastructure Program	Various	NJDOT	Various	NEVFP	ERC	\$16.709	\$17.378	\$18.073								\$52.160
X241	Electrical Facilities	Various	NJDOT	Various	STATE	EC	\$6.000	\$6.000	\$6.000	\$6.000	\$6.000	\$6.000	\$6.000	\$6.000	\$6.000	\$6.000	\$60.000
4324	Electrical Load Center Replacement, Statewide	Various	NJDOT	Various	STATE	ERC	\$6.000	\$6.000	\$6.000	\$6.000	\$6.000	\$6.000	\$6.000	\$6.000	\$6.000	\$6.000	\$60.000
17360	Emergency Management and Transportation Security Support	Various	NJDOT	Various	STATE	ERC	\$1.500	\$1.500	\$1.500	\$1.500	\$1.500	\$1.500	\$1.500	\$1.500	\$1.500	\$1.500	\$15.000

X75	Environmental Investigations	Various	NJDOT	Various	STATE	EC	\$7.500	\$7.500	\$7.500	\$7.500	\$7.500	\$7.500	\$7.500	\$7.500	\$7.500	\$7.500	\$75.000
3309	Environmental Project Support	Various	NJDOT	Various	STATE	ERC	\$1.200	\$1.200	\$1.200	\$1.200	\$1.200	\$1.200	\$1.200	\$1.200	\$1.200	\$1.200	\$12.000
X15	Equipment (Vehicles, Construction, Safety)	Various	NJDOT	Various	STATE	EC	\$20.000	\$20.000	\$20.000	\$20.000	\$20.000	\$20.000	\$20.000	\$20.000	\$20.000	\$20.000	\$200.000
X15A	Equipment, Snow and Ice Removal	Various	NJDOT	Various	STATE	EC	\$4.000	\$4.000	\$4.000	\$4.000	\$4.000	\$4.000	\$4.000	\$4.000	\$4.000	\$4.000	\$40.000
377	Ferry Program	Various	NJDOT	Various	FBP	ERC	\$4.000	\$4.000	\$4.000	\$4.000	\$4.000	\$4.000	\$4.000	\$4.000	\$4.000	\$4.000	\$40.000
X201	Guiderail Upgrade	Various	NJDOT	Various	NHPP	ERC	\$24.000	\$24.000	\$24.000	\$24.000	\$24.000	\$24.000	\$24.000	\$24.000	\$24.000	\$24.000	\$240.000
					STATE	ERC	\$1.000	\$1.000	\$1.000	\$1.000	\$1.000	\$1.000	\$1.000	\$1.000	\$1.000	\$1.000	\$10.000
97008	High-Mast Light Poles	Various	NJDOT	Various	NHPP	ERC	\$1.000	\$1.000	\$1.000	\$1.000	\$1.000	\$1.000	\$1.000	\$1.000	\$1.000	\$1.000	\$10.000
					STBGP-FLEX	ERC	\$1.000	\$1.000	\$1.000	\$1.000	\$1.000	\$1.000	\$1.000	\$1.000	\$1.000	\$1.000	\$10.000
9388	Highway Safety Improvement Program Planning	Various	NJDOT	Various	HSIP	PLS	\$10.000	\$10.000	\$10.000	\$10.000	\$10.000	\$10.000	\$10.000	\$10.000	\$10.000	\$10.000	\$100.000
15343	Intelligent Traffic Signal Systems	Various	NJDOT	Various	CMAQ	ERC	\$9.999	\$10.105	\$10.262	\$5.519	\$8.073	\$8.776	\$9.827	\$9.583	\$9.335	\$10.262	\$91.741
					CR-FLEX	ERC	\$9.810	\$10.026	\$10.246	\$10.471	\$10.701	\$10.935	\$11.173	\$11.417	\$11.665	\$11.919	\$108.362
					STBGP-FLEX	EC	\$3.500	\$3.500	\$3.500	\$3.500	\$3.500	\$3.500	\$3.500	\$3.500	\$3.500	\$3.500	\$35.000
13304	Intelligent Transportation System Resource Center	Various	NJDOT	Various	STBGP-FLEX	EC	\$3.500	\$3.500	\$3.500	\$3.500	\$3.500	\$3.500	\$3.500	\$3.500	\$3.500	\$3.500	\$35.000
X151	Interstate Service Facilities	Various	NJDOT	Various	STATE	EC	\$0.750	\$0.750	\$0.750	\$0.750	\$0.750	\$0.750	\$0.750	\$0.750	\$0.750	\$0.750	\$7.500
23314	ITS Safety Program	Various	NJDOT	Various	HSIP	ERC	\$3.000	\$3.000	\$3.000	\$3.000	\$3.000	\$3.000	\$3.000	\$3.000	\$3.000	\$3.000	\$30.000
13305	Job Order Contracting Infrastructure Repairs, Statewide	Various	NJDOT	Various	NHPP	EC	\$8.000	\$8.250	\$8.500	\$8.750	\$9.000	\$9.250	\$9.500	\$9.750	\$10.000	\$10.250	\$91.250
					STATE	EC	\$25.000	\$25.000	\$25.000	\$25.000	\$25.000	\$25.000	\$25.000	\$25.000	\$25.000	\$25.000	\$250.000
X137	Legal Costs for Right of Way Condemnation	Various	NJDOT	Various	STATE	EC	\$1.900	\$1.900	\$1.900	\$1.900	\$1.900	\$1.900	\$1.900	\$1.900	\$1.900	\$1.900	\$19.000
X186	Local Aid, Infrastructure Fund	Various	Local Lead	Various	STATE	ERC	\$7.500	\$7.000	\$7.000	\$7.000	\$7.000	\$7.000	\$7.000	\$7.000	\$7.000	\$7.000	\$70.500
X186B	Local Aid, State Transportation Infrastructure Bank	Various	Local Lead	Various	STATE	ERC	\$22.600	\$21.000	\$21.000	\$21.000	\$21.000	\$21.000	\$21.000	\$21.000	\$21.000	\$21.000	\$211.600
8387	Local Bridges, Future Needs	Various	NJDOT	Various	STATE	ERC	\$47.300	\$44.000	\$44.000	\$44.000	\$44.000	\$44.000	\$44.000	\$44.000	\$44.000	\$44.000	\$443.300
17390	Local Freight Impact Fund	Various	NJDOT	Various	STATE	ERC	\$30.100	\$28.000	\$28.000	\$28.000	\$28.000	\$28.000	\$28.000	\$28.000	\$28.000	\$28.000	\$282.100

X98Z	Local Municipal Aid, Urban Aid	Various	Local Lead	Various	STATE	ERC	\$10.000	\$9.000	\$9.000	\$9.000	\$9.000	\$9.000	\$9.000	\$9.000	\$9.000	\$9.000	\$91.000
1309	Maritime Transportation System	Various	NJDOT	Various	STATE	EC	\$20.000	\$20.000	\$20.000	\$20.000	\$20.000	\$20.000	\$20.000	\$20.000	\$20.000	\$20.000	\$200.000
7332	Minority and Women Workforce Training Set Aside	Various	NJDOT	Various	STATE	EC	\$1.500	\$1.500	\$1.500	\$1.500	\$1.500	\$1.500	\$1.500	\$1.500	\$1.500	\$1.500	\$15.000
13306	Mobility and Systems Engineering Program	Various	NJDOT	Various	NHPP	EC	\$6.000	\$6.000	\$6.000	\$6.000	\$6.000	\$6.000	\$6.000	\$6.000	\$6.000	\$6.000	\$60.000
					STATE	EC	\$3.000	\$3.000	\$3.000	\$3.000	\$3.000	\$3.000	\$3.000	\$3.000	\$3.000	\$3.000	\$30.000
X233	Motor Vehicle Crash Record Processing	Various	NJDOT	Various	HSIP	PLS	\$6.400	\$6.400	\$6.400	\$6.400	\$6.400	\$6.400	\$6.400	\$6.400	\$6.400	\$6.400	\$64.000
X34	New Jersey Rail Freight Assistance Program	Various	NJDOT	Various	STATE	EC	\$25.000	\$25.000	\$25.000	\$25.000	\$25.000	\$25.000	\$25.000	\$25.000	\$25.000	\$25.000	\$250.000
X200C	New Jersey Scenic Byways Program	Various	NJDOT	Various	TA-FLEX	ERC	\$0.500	\$0.500	\$0.500	\$0.500	\$0.500	\$0.500	\$0.500	\$0.500	\$0.500	\$0.500	\$5.000
99372	Orphan Bridge Reconstruction	Various	NJDOT	Various	STATE	EC	\$3.000	\$3.000	\$3.000	\$3.000	\$3.000	\$3.000	\$3.000	\$3.000	\$3.000	\$3.000	\$30.000
X28B	Park and Ride/Transportation Demand Management Program	Various	NJDOT	Various	STATE	EC	\$0.700	\$0.700	\$0.700	\$0.700	\$0.700	\$0.700	\$0.700	\$0.700	\$0.700	\$0.700	\$7.000
X51	Pavement Preservation	Various	NJDOT	Various	NHPP	ERC	\$8.000	\$10.000	\$10.000	\$1.000	\$1.000	\$1.000	\$1.000	\$1.000	\$1.000	\$1.000	\$35.000
X29	Physical Plant	Various	NJDOT	Various	STATE	ERC	\$20.000	\$20.000	\$20.000	\$20.000	\$20.000	\$20.000	\$20.000	\$20.000	\$20.000	\$20.000	\$200.000
X30	Planning and Research, Federal-Aid	Various	NJDOT	Various	LTAP	PLS	\$0.150	\$0.150	\$0.150	\$0.150	\$0.150	\$0.150	\$0.150	\$0.150	\$0.150	\$0.150	\$1.500
					SPR	PLS	\$39.784	\$40.301	\$39.829	\$27.365	\$27.913	\$28.471	\$29.040	\$29.621	\$30.213	\$30.818	\$323.355
					STBGP-FLEX	PLS	\$12.000	\$12.000	\$12.000	\$12.000	\$12.000	\$12.000	\$12.000	\$12.000	\$12.000	\$12.000	\$120.000
X140	Planning and Research, State	Various	NJDOT	Various	STATE	PLS	\$2.000	\$2.000	\$2.000	\$2.000	\$2.000	\$2.000	\$2.000	\$2.000	\$2.000	\$2.000	\$20.000
X135	Pre-Apprenticeship Training Program for Minorities and Women	Various	NJDOT	Various	STBGP-FLEX	EC	\$0.500	\$0.500	\$0.500	\$0.500	\$0.500	\$0.500	\$0.500	\$0.500	\$0.500	\$0.500	\$5.000
X10	Program Implementation Costs, NJDOT	Various	NJDOT	Various	STATE	EC	\$110.000	\$110.000	\$110.000	\$110.000	\$110.000	\$110.000	\$110.000	\$110.000	\$110.000	\$110.000	\$1,100.000
10344	Project Development: Concept Development and Preliminary Engineering	Various	NJDOT	Various	STATE	CD	\$4.000	\$4.000	\$4.000	\$4.000	\$4.000	\$4.000	\$4.000	\$4.000	\$4.000	\$4.000	\$40.000
22353	PROTECT	Various	NJDOT	Various	PFP	ERC	\$11.118	\$11.820	\$12.537	\$13.268	\$14.013	\$14.773	\$15.549	\$16.340	\$17.146	\$17.969	\$144.533
					PFP	PLS	\$1.000	\$1.000	\$1.000	\$1.000	\$1.000	\$1.000	\$1.000	\$1.000	\$1.000	\$1.000	\$10.000

X35A	Rail-Highway Grade Crossing Program, State	Various	NJDOT	Various	STATE	CON	\$5.000	\$5.000	\$5.000	\$5.000	\$5.000	\$5.000	\$5.000	\$5.000	\$5.000	\$5.000	\$50.000
99409	Recreational Trails Program	Various	NJDEP	Various	RTP	ERC	\$1.227	\$1.227	\$1.227	\$1.227	\$1.227	\$1.227	\$1.227	\$1.227	\$1.227	\$1.227	\$12.268
X144	Regional Action Program	Various	NJDOT	Various	STATE	EC	\$2.000	\$2.000	\$2.000	\$2.000	\$2.000	\$2.000	\$2.000	\$2.000	\$2.000	\$2.000	\$20.000
X03A	Restriping Program & Line Reflectivity Management System	Various	NJDOT	Various	STBGP-FLEX	EC	\$25.000	\$25.000	\$25.000	\$16.000	\$16.000	\$16.000	\$16.000	\$16.000	\$16.000	\$16.000	\$187.000
X03E	Resurfacing Program	Various	NJDOT	Various	STATE	EC	\$90.780	\$90.780	\$90.780	\$90.780	\$90.780	\$90.780	\$90.780	\$90.780	\$90.780	\$90.780	\$907.800
99327A	Resurfacing, Federal	Various	NJDOT	Various	NHPP	ERC	\$50.000	\$50.000	\$50.000	\$35.000	\$35.000	\$35.000	\$35.000	\$35.000	\$35.000	\$35.000	\$395.000
5340	Right of Way Full-Service Consultant Term Agreements	Various	NJDOT	Various	STATE	ROW	\$0.050	\$0.050	\$0.050	\$0.050	\$0.050	\$0.050	\$0.050	\$0.050	\$0.050	\$0.050	\$0.500
					STBGP-FLEX	ROW	\$0.300	\$0.300	\$0.300	\$0.300	\$0.300	\$0.300	\$0.300	\$0.300	\$0.300	\$0.300	\$3.000
X152	Rockfall Mitigation	Various	NJDOT	Various	NHPP	ERC						\$10.000	\$10.000	\$10.000	\$10.000	\$10.000	\$50.000
99358	Safe Routes to School Program	Various	Local Lead	Various	TA-FLEX	ERC	\$7.587	\$7.587	\$7.587	\$7.587	\$7.587	\$7.587	\$7.587	\$7.587	\$7.587	\$7.587	\$75.870
6402	Safe Streets to Transit Program	Various	NJDOT	Various	STATE	EC	\$1.000	\$1.000	\$1.000	\$1.000	\$1.000	\$1.000	\$1.000	\$1.000	\$1.000	\$1.000	\$10.000
19370	Safety Programs	Various	NJDOT	Various	HSIP	ERC	\$5.584	\$6.930	\$8.304	\$9.638	\$10.998	\$12.386	\$13.802	\$15.246	\$16.719	\$18.222	\$117.829
					HSIP-VRUS	ERC	\$11.291	\$11.529	\$11.771	\$12.007	\$12.247	\$12.492	\$12.742	\$12.996	\$13.256	\$13.521	\$123.852
					STATE	ERC	\$0.250	\$0.250	\$0.250	\$0.250	\$0.250	\$0.250	\$0.250	\$0.250	\$0.250	\$0.250	\$2.500
13307	Salt Storage Facilities - Statewide	Various	NJDOT	Various	STATE	ERC	\$3.000	\$3.000	\$3.000	\$3.000	\$3.000	\$3.000	\$3.000	\$3.000	\$3.000	\$3.000	\$30.000
X239	Sign Structure Inspection Program	Various	NJDOT	Various	STATE	EC	\$2.100	\$2.100	\$2.100	\$2.100	\$2.100	\$2.100	\$2.100	\$2.100	\$2.100	\$2.100	\$21.000
X239A	Sign Structure Rehabilitation/Replacement Program	Various	NJDOT	Various	STBGP-FLEX	ERC	\$1.000	\$1.000	\$1.000	\$1.000	\$1.000	\$1.000	\$1.000	\$1.000	\$1.000	\$1.000	\$10.000
22319	Sign Structure Replacement Contract 2021-2	Various	NJDOT	Various	NHPP	CON	\$4.600										\$4.600
X39	Signs Program, Statewide	Various	NJDOT	Various	STATE	EC	\$4.000	\$4.000	\$4.000	\$4.000	\$4.000	\$4.000	\$4.000	\$4.000	\$4.000	\$4.000	\$40.000
S2319	SJTPO Carbon Reduction Program	Various	SJTPO	Various	CR-B50K20 OK	ERC	\$0.319	\$0.325	\$0.331	\$0.337	\$0.423	\$0.429	\$0.435	\$0.441	\$0.447	\$0.453	\$3.940
19600	Smart and Connect Corridors Program	Various	NJDOT	Various	STATE	ERC	\$7.000	\$7.000	\$7.000	\$7.000	\$7.000	\$7.000	\$7.000	\$7.000	\$7.000	\$7.000	\$70.000
X160	Solid and Hazardous Waste Cleanup,	Various	NJDOT	Various	STATE	EC	\$2.000	\$2.000	\$2.000	\$2.000	\$2.000	\$2.000	\$2.000	\$2.000	\$2.000	\$2.000	\$20.000

	Reduction and Disposal																
23313	Specified Safety Program	Various	NJDOT	Various	HSIP	PLS	\$2.000	\$2.000	\$2.000	\$2.000	\$2.000	\$2.000	\$2.000	\$2.000	\$2.000	\$2.000	\$20.000
X10A	Staff Augmentation	Various	NJDOT	Various	STATE	ERC	\$1.000	\$1.000	\$1.000	\$1.000	\$1.000	\$1.000	\$1.000	\$1.000	\$1.000	\$1.000	\$10.000
X150	State Police Enforcement and Safety Services	Various	NJDOT	Various	STATE	EC	\$15.000	\$15.000	\$15.000	\$15.000	\$15.000	\$15.000	\$15.000	\$15.000	\$15.000	\$15.000	\$150.000
13308	Statewide Traffic Operations and Support Program	Various	NJDOT	Various	NHPP	EC	\$17.000	\$17.000	\$17.000	\$17.000	\$17.000	\$17.000	\$17.000	\$17.000	\$17.000	\$17.000	\$170.000
17353	Storm Water Asset Management	Various	NJDOT	Various	STBGP-FLEX	ERC	\$2.484	\$2.858	\$3.000	\$3.000	\$3.000	\$3.000	\$3.000	\$3.000	\$3.000	\$3.000	\$29.342
					TA-FLEX	ERC	\$1.000	\$1.000	\$1.000	\$1.000	\$1.000	\$1.000	\$1.000	\$1.000	\$1.000	\$1.000	\$10.000
14300	Title VI and Nondiscrimination Supporting Activities	Various	NJDOT	Various	STATE	EC	\$0.100	\$0.100	\$0.100	\$0.100	\$0.100	\$0.100	\$0.100	\$0.100	\$0.100	\$0.100	\$1.000
X66	Traffic Monitoring Systems	Various	NJDOT	Various	NHPP	PLS	\$12.000	\$12.000	\$12.000	\$12.000	\$12.000	\$12.000	\$12.000	\$12.000	\$12.000	\$12.000	\$120.000
					STATE	EC	\$1.490	\$1.490	\$1.490	\$1.490	\$1.490	\$1.490	\$1.490	\$1.490	\$1.490	\$1.490	\$14.900
X47	Traffic Signal Replacement	Various	NJDOT	Various	STATE	EC	\$10.000	\$10.000	\$10.000	\$10.000	\$10.000	\$10.000	\$10.000	\$10.000	\$10.000	\$10.000	\$100.000
X244	Training and Employee Development	Various	NJDOT	Various	STBGP-FLEX	EC	\$2.500	\$2.500	\$2.500	\$2.500	\$2.500	\$2.500	\$2.500	\$2.500	\$2.500	\$2.500	\$25.000
1316	Transit Village Program	Various	NJDOT	Various	STATE	EC	\$1.000	\$1.000	\$1.000	\$1.000	\$1.000	\$1.000	\$1.000	\$1.000	\$1.000	\$1.000	\$10.000
X107	Transportation Alternatives Program	Various	NJDOT	Various	TA-B50K20 OK	ERC	\$0.439	\$0.448	\$0.457	\$0.467	\$0.477	\$0.487	\$0.497	\$0.508	\$0.519	\$0.530	\$4.828
					TA-B5K50K	ERC	\$0.439	\$0.448	\$0.457	\$0.467	\$0.477	\$0.487	\$0.497	\$0.508	\$0.519	\$0.530	\$4.828
					TA-FLEX	ERC	\$3.614	\$3.898	\$4.188	\$4.483	\$4.785	\$5.092	\$5.406	\$5.726	\$6.052	\$6.385	\$49.629
					TA-L5K	ERC	\$1.074	\$1.097	\$1.120	\$1.144	\$1.168	\$1.193	\$1.218	\$1.243	\$1.270	\$1.297	\$11.821
X126	Transportation Research Technology	Various	NJDOT	Various	STATE	EC	\$1.700	\$1.700	\$1.700	\$1.700	\$1.700	\$1.700	\$1.700	\$1.700	\$1.700	\$1.700	\$17.000
23315	Tunnel Inspection, NTIS	Various	NJDOT	Various	NHPP	EC	\$0.100	\$0.300	\$0.100	\$0.325	\$0.100	\$0.650	\$0.100	\$0.800	\$0.100	\$0.900	\$3.475
X11	Unanticipated Design, Right of Way and Construction Expenses, State	Various	NJDOT	Various	STATE	ERC	\$40.900	\$63.900	\$63.900	\$63.900	\$63.900	\$63.900	\$63.900	\$63.900	\$63.900	\$63.900	\$616.000
X182	Utility Reconnaissance and Relocation	Various	NJDOT	Various	STATE	EC	\$2.500	\$2.500	\$2.500	\$2.500	\$2.500	\$2.500	\$2.500	\$2.500	\$2.500	\$2.500	\$25.000

19332	Vegetation Safety Management Program	Various	NJDOT	Various	HSIP	ERC	\$3.000	\$3.000	\$3.000	\$3.000	\$3.000	\$3.000	\$3.000	\$3.000	\$3.000	\$3.000	\$30.000
X199	Youth Employment and TRAC Programs	Various	NJDOT	Various	STBGP-FLEX	EC	\$0.350	\$0.350	\$0.350	\$0.350	\$0.350	\$0.350	\$0.350	\$0.350	\$0.350	\$0.350	\$3.500

NJ TRANSIT Projects & Programs

DBNUM	PROJECT NAME	COUNTY	SPONSOR	MUNICIPALITY	FUND	PHASE	2024	2025	2026	2027	2028	2029	2030	2031	2032	2033	TOTAL
T143	ADA--Platforms/Stations	Various	NJ TRANSIT	Various	STATE	ERC	\$0.035	\$0.035	\$0.035	\$0.035	\$0.035	\$0.035	\$0.035	\$0.035	\$0.035	\$0.035	\$0.350
T05	Bridge and Tunnel Rehabilitation	Various	NJ TRANSIT	Various	STATE	ERC	\$0.205	\$0.205	\$0.205	\$0.205	\$0.205	\$0.205	\$0.205	\$0.205	\$0.205	\$0.205	\$2.053
T111	Bus Acquisition Program	Various	NJ TRANSIT	Various	SECT 5339	CAP	\$1.357	\$1.384	\$1.413	\$1.456	\$1.500	\$1.546	\$1.592	\$1.640	\$1.690	\$1.741	\$15.319
					STATE	CAP	\$10.990	\$10.990	\$10.990	\$10.990	\$11.710	\$11.710	\$11.710	\$11.710	\$11.710	\$11.710	\$114.220
T06	Bus Passenger Facilities/Park and Ride	Various	NJ TRANSIT	Various	STATE	ERC	\$0.056	\$0.056	\$0.056	\$0.056	\$0.056	\$0.056	\$0.056	\$0.056	\$0.056	\$0.056	\$0.560
T08	Bus Support Facilities and Equipment	Various	NJ TRANSIT	Various	SECT 5339	ERC	\$0.035	\$0.035	\$0.035	\$0.035	\$0.035	\$0.035	\$0.035	\$0.035	\$0.035	\$0.035	\$0.350
					STATE	ERC	\$1.004	\$0.455	\$0.455	\$0.455	\$0.455	\$0.455	\$0.455	\$0.455	\$0.455	\$0.455	\$5.099
T09	Bus Vehicle and Facility Maintenance/Capital Maintenance	Various	NJ TRANSIT	Various	SECT 5339	EC	\$5.122	\$0.070									\$5.192
					STATE	EC	\$1.347	\$0.007	\$0.007	\$0.007	\$0.007	\$0.007	\$0.007	\$0.007	\$0.007	\$0.007	\$1.410
T68	Capital Program Implementation	Various	NJ TRANSIT	Various	STATE	ERC	\$1.820	\$1.820	\$1.820	\$1.820	\$1.820	\$1.820	\$1.820	\$1.820	\$1.820	\$1.820	\$18.200
T515	Casino Revenue Fund	Various	NJ TRANSIT	Various	CASINO REVENUE	CAP	\$2.589	\$2.666	\$2.746	\$2.829	\$2.914	\$3.001	\$3.091	\$3.184	\$3.279	\$3.378	\$29.677
T13	Claims support	Various	NJ TRANSIT	Various	STATE	EC	\$0.007	\$0.007	\$0.007	\$0.007	\$0.007	\$0.007	\$0.007	\$0.007	\$0.007	\$0.007	\$0.070
T170	Cumberland County Bus Program	Cumberland	NJ TRANSIT	Various	SECT 5307	CAP	\$1.020	\$1.020	\$1.020	\$1.020	\$1.020	\$1.020	\$1.020	\$1.020	\$1.020	\$1.020	\$10.200
T16	Environmental Compliance	Various	NJ TRANSIT	Various	STATE	ERC	\$0.210	\$0.210	\$0.210	\$0.210	\$0.210	\$0.210	\$0.210	\$0.210	\$0.210	\$0.210	\$2.100
T43	High Speed Track Program	Various	NJ TRANSIT	Various	STATE	ERC	\$0.037	\$0.037	\$0.037	\$0.037	\$0.037	\$0.037	\$0.037	\$0.037	\$0.037	\$0.037	\$0.372
T20	Immediate Action Program	Various	NJ TRANSIT	Various	STATE	ERC	\$1.795	\$1.866	\$1.436	\$2.323	\$3.025	\$3.270	\$3.060	\$3.060	\$3.060	\$3.060	\$25.956
T53E	Locomotive Overhaul	Various	NJ TRANSIT	Various	SECT 5337	CAP	\$0.884	\$0.546	\$0.546								\$1.975
					STATE	CAP			\$0.031	\$0.031	\$0.031	\$0.031	\$0.031	\$0.031	\$0.031	\$0.031	\$0.248
T122	Miscellaneous	Various	NJ TRANSIT	Various	STATE	ERC	\$0.035	\$0.035	\$0.035	\$0.035	\$0.035	\$0.035	\$0.035	\$0.035	\$0.035	\$0.035	\$0.350
T55	Other Rail Station/Terminal Improvements	Various	NJ TRANSIT	Various	STATE	ERC	\$0.446	\$0.446	\$0.397	\$0.397	\$0.397	\$0.397	\$0.397	\$0.397	\$0.397	\$0.397	\$4.064
T121	Physical Plant	Various	NJ TRANSIT	Various	STATE	ERC	\$0.532	\$0.532	\$0.532	\$0.532	\$0.532	\$0.532	\$0.532	\$0.532	\$0.532	\$0.532	\$5.315

T135	Preventive Maintenance-Bus	Various	NJ TRANSIT	Various	SECT 5307	CAP	\$7.372	\$8.079	\$12.415	\$13.742	\$19.253	\$19.877	\$20.512	\$21.161	\$21.822	\$22.497	\$166.729
T39	Preventive Maintenance-Rail	Various	NJ TRANSIT	Various	SECT 5307	CAP	\$1.019	\$1.355	\$1.355	\$1.355	\$1.355	\$1.355	\$1.355	\$1.355	\$1.355	\$1.355	\$13.214
					SECT 5337	CAP	\$2.065	\$2.486	\$2.690	\$3.228	\$3.309	\$3.393	\$3.477	\$3.564	\$3.652	\$3.742	\$31.606
T106	Private Carrier Equipment Program	Various	NJ TRANSIT	Various	STATE	CAP	\$0.210	\$0.210	\$0.210	\$0.210	\$0.210	\$0.210	\$0.210	\$0.210	\$0.210	\$0.210	\$2.100
T34	Rail Capital Maintenance	Various	NJ TRANSIT	Various	STATE	CAP			\$0.853	\$1.225	\$1.225	\$1.225	\$1.225	\$1.225	\$1.225	\$1.238	\$9.441
T53G	Rail Fleet Overhaul	Various	NJ TRANSIT	Various	STATE	CAP	\$0.025	\$0.031									\$0.056
T112	Rail Rolling Stock Procurement	Various	NJ TRANSIT	Various	CMAQ	CAP		\$0.794	\$0.930	\$0.930	\$0.930	\$0.930	\$0.930	\$0.930	\$0.930	\$0.930	\$8.234
					SECT 5307	CAP	\$0.015	\$0.156	\$0.305	\$0.305	\$0.305	\$0.305	\$0.305	\$0.305	\$0.305	\$0.305	\$2.612
					SECT 5337	CAP	\$0.655	\$0.789	\$0.789	\$0.789	\$0.789	\$0.789	\$0.789	\$0.789	\$0.789	\$0.789	\$7.754
					STATE	CAP	\$0.986	\$0.856	\$1.072	\$1.072	\$0.947	\$0.941	\$0.941	\$0.941	\$0.941	\$0.941	\$9.638
T37	Rail Support Facilities and Equipment	Various	NJ TRANSIT	Various	SECT 5307	ERC		\$0.305									\$0.305
					SECT 5337	ERC			\$0.192								\$0.192
					STATE	ERC	\$0.052	\$0.052	\$0.052	\$0.052	\$0.052	\$0.052	\$0.052	\$0.052	\$0.052	\$0.052	\$0.524
T509	Safety Improvement Program	Various	NJ TRANSIT	Various	STATE	ERC	\$0.009	\$0.009	\$0.009	\$0.009	\$0.009	\$0.009	\$0.009	\$0.009	\$0.009	\$0.009	\$0.090
T150	Section 5310 Program	Various	NJ TRANSIT	Various	SECT 5310	CAP	\$0.818	\$0.834	\$0.859	\$0.876	\$0.893	\$0.911	\$0.929	\$0.948	\$0.967	\$0.986	\$9.022
					STATE	CAP	\$0.123	\$0.123	\$0.123	\$0.123	\$0.123	\$0.123	\$0.123	\$0.123	\$0.123	\$0.123	\$1.225
T151	Section 5311 Program	Various	NJ TRANSIT	Various	MATCH	CAP	\$0.133	\$0.133	\$0.133	\$0.133	\$0.133	\$0.133	\$0.133	\$0.133	\$0.133	\$0.133	\$1.330
					SECT 5311	CAP	\$0.414	\$0.423	\$0.435	\$0.444	\$0.453	\$0.462	\$0.471	\$0.480	\$0.490	\$0.500	\$4.572
					STATE	CAP	\$0.007	\$0.007	\$0.007	\$0.007	\$0.007	\$0.007	\$0.007	\$0.007	\$0.007	\$0.007	\$0.070
T508	Security Improvements	Various	NJ TRANSIT	Various	STATE	SWI	\$0.173	\$0.173	\$0.173	\$0.173	\$0.173	\$0.173	\$0.173	\$0.173	\$0.173	\$0.173	\$1.729
T50	Signals and Communications/Electric Traction Systems	Various	NJ TRANSIT	Various	STATE	ERC	\$0.462	\$0.269	\$0.136	\$0.136	\$0.136	\$0.136	\$0.136	\$0.136	\$0.136	\$0.136	\$1.822
T120	Small/Special Services Program	Various	NJ TRANSIT	Various	STATE	EC	\$0.096	\$0.096	\$0.096	\$0.096	\$0.096	\$0.096	\$0.096	\$0.096	\$0.096	\$0.096	\$0.961
T88	Study and Development	Various	NJ TRANSIT	Various	STATE	PLS	\$0.496	\$0.496	\$0.456	\$0.286	\$0.286	\$0.286	\$0.286	\$0.286	\$0.286	\$0.286	\$3.450
T500	Technology Improvements	Various	NJ TRANSIT	Various	STATE	EC	\$0.658	\$0.658	\$0.658	\$0.658	\$0.658	\$0.658	\$0.658	\$0.658	\$0.658	\$0.658	\$6.584

T42	Track Program	Various	NJ TRANSIT	Various	STATE	ERC	\$0.353	\$0.353	\$0.353	\$0.353	\$0.353	\$0.353	\$0.353	\$0.353	\$0.353	\$0.353	\$3.534
T210	Transit Enhancements/Transp Altern Prog (TAP)/Altern Transit Improv (ATI)	Various	NJ TRANSIT	Various	SECT 5307	ERC	\$0.057			\$0.268	\$0.268	\$0.268	\$0.268	\$0.268	\$0.268	\$0.268	\$1.933
					SECT 5337	ERC	\$0.062	\$0.062	\$0.062	\$0.062	\$0.062	\$0.062	\$0.062	\$0.062	\$0.062	\$0.062	\$0.620
					STATE	ERC				\$0.292	\$3.498	\$8.109	\$6.811	\$6.863	\$6.863	\$6.805	\$39.241
T300	Transit Rail Initiatives	Various	NJ TRANSIT	Various	STATE	ERC	\$1.698	\$1.962	\$1.698	\$1.698	\$1.698	\$1.698	\$3.152	\$3.152	\$3.152	\$3.152	\$23.062

Acronym Guide

AAA	American Automobile Association
AARP	American Association of Retired Persons
ADA	Americans with Disabilities Act of 1990
AMTRAK	National Railroad Passenger Corporation
ATI	Alternate Transit Improvements
BIL	Bipartisan Infrastructure Law
BRT	Bus Rapid Transit
CAP	Capital Acquisition
CASINO REVENUE	Annual allocation of the Casino Revenue Fund appropriated for transportation services for senior citizens and disabled residents
CD/LCD	Concept Development
CFR	Code of Federal Regulations
CIS	Capital Investment Strategy
CMAQ	Congestion Mitigation and Air Quality
CON	Construction
COPS	Certificates of Participation
CPC	Capital Program Committee
CPR	Carbon Reduction Program
CPS	Child Passenger Safety
CPSC	Capital Program Screening Committee
CR	County Route
CR	Carbon Reduction
CRRSAA-AC	Coronavirus Response and Relief Supplemental Appropriations Act, 2021, for use in Atlantic City Urbanized Area
CRRSAA-FLEX	Coronavirus Response and Relief Supplemental Appropriations Act, 2021, not allocated to a specific population area

CY	Calendar Year
DBE	Disadvantaged Business Enterprise
DBNUM	Database Number
DEMO	Demonstration Funds
DES	Final Design
DGA	Dense Graded Aggregate
DVRPC	Delaware Valley Regional Planning Commission
EC	Design and Construction
EFLHD	Eastern Federal Lands Highway Division
ERC	Design, Right of Way, and Construction
FA	Feasibility Assessment
FAST ACT	Fixing America's Surface Transportation Act
FBP/FBP-FHWA	Ferry Boat Program
FFGAs	Full Funding Grant Agreements
FFY(s)	Federal Fiscal Year(s) (October 1 – September 30)
FHWA	Federal Highway Administration
FIP	Freight Investment Plan
FTA	Federal Transit Administration
GIS	Geographic Information System
GPS	Global Positioning System
HARs	Highway Advisory Radio system
HIP	Highway Infrastructure Program
HMA	Hot Mix Asphalt
HOV	High-Occupancy Vehicle
HSIP	Highway Safety Improvement Program
HSM	Highway Safety Manual

HWIZ005-AC	Highway Infrastructure Program (HIP) federal funds allocated to Atlantic City Urbanized Area
HWIZ905-AC	Highway Infrastructure Program (HIP) federal funds allocated to Atlantic City Urbanized Area
HWIZ910-AC	Highway Infrastructure Program (HIP) federal funds allocated to Atlantic City Urbanized Area
HWIZ919-AC	Highway Infrastructure Program (HIP) federal funds allocated to Atlantic City Urbanized Area
ICG	Interagency Consultation Group
IJA	Infrastructure Investment and Jobs Act
ISTEA	Intermodal Surface Transportation Efficiency Act of 1991
ITS	Intelligent Transportation System
JARC	Job Access and Reverse Commute Program
LRT	Light Rail Transit
LTAP	Local Technical Assistance Program
MAP-21 ACT	Moving Ahead for Progress in the 21 st Century Act
MATCH	Local funds to New Jersey Transit (NJ TRANSIT) needed to match federal funding (JARC and Section 5311)
MOU	Memorandum of Understanding
MP(s)	Milepost(s)
MPA	Metropolitan Planning Area
MPO(s)	Metropolitan Planning Organization(s)
MUTCD	Manual on Uniform Traffic Control Devices
NAAQS	National Ambient Air Quality Standards
NBI	National Bridge Inventory
NEPA	National Environmental Policy Act
NHPA	National Historic Preservation Act of 1966
NHPP	National Highway Performance Program
NHS	National Highway System

NJ TRANSIT	New Jersey Transit
NJDEP	New Jersey Department of Environmental Protection
NJDHTS	New Jersey Division of Highway Traffic Safety
NJDOT	New Jersey Department of Transportation
NJTA	New Jersey Turnpike Authority
NJTPA	North Jersey Transportation Planning Authority
Non-SOV	Non-Single Occupancy Vehicle
NOx	Oxides of Nitrogen
NPMRDS	National Performance Management Research Data Set
NTD	National Transit Database
O&M	Operations and Maintenance
OPER	Operational Assistance Funding
PANYNJ	Port Authority of New York and New Jersey
PATCO	Port Authority Transit Corporation
PATH	Port Authority Trans-Hudson Corporation
PBPP	Performance-Based Planning and Programming
PD/LPD	Preliminary Design
PE	Preliminary Engineering
PennDOT	Pennsylvania Department of Transportation
PHED	Peak Hour Excessive Delay
PIP	Public Involvement Plan
PL/PL-FTA	Planning
PLS	Planning Study
PM 1/Safety PM Rule	Safety Performance Management Measures Rule
PM 2	Pavement and Bridge Condition Performance Measures
PM 2.5	Particular Matter, 2.5 particle size
PM 3	System Performance Measures

PMRS	Project Management & Reporting System
PMT	Person-miles Traveled
PPA	Preliminary Preferred Alternative
PS	Problem Screening
PTASP	Public Transportation Agency Safety Plan
Pub. L.	Public Law
RAISE	Rebuilding American Infrastructure with Sustainability and Equity Grant Program
RHC	Rail-Highway Grade Crossings Program
RHC-FLEX	Rail-Highway Grade Crossings Program, flex funding, not allocated to a specific population area
ROW	Right of Way
RPMs	Raised Pavement Markers
RTP	Regional Transportation Plan
SAFETEA-LU	Safe, Accountable, Flexible, Efficient Transportation Equity Act: A Legacy for Users
SCIS	Statewide Capital Investment Strategy
SECT 5307 (et al.)	Section 5307 (et al.), defined in Glossary
FY	State Fiscal Year (July 1 to June 30)
SGR	State of Good Repair
SHSP	Strategic Highway Safety Plan
SIP	State Implementation Plan
SJEDD	South Jersey Economic Development District
SJTA	South Jersey Transportation Authority
SJTPO	South Jersey Transportation Planning Organization
SMS	Safety Management System
SPR/SPR-FTA	Statewide Planning and Research
SRTS	Safe Routes to School

SS4A	Safe Streets and Roads for All
STATE	The disposition of funding received from the New Jersey Transportation Trust Fund (TTF)
STBGP	Surface Transportation Block Grant Program
STBGP-AC	Surface Transportation Block Grant Program, for use in the Atlantic City Urbanized Area
STBGP-B50K200K	Surface Transportation Block Grant Program, for use in areas with populations between 50,000 and 200,000 persons
STBGP-B5K50K	Surface Transportation Block Grant Program, for use in areas with populations between 5,000 and 50,000 persons
STBGP-FLEX	Surface Transportation Block Grant Program, flex funding, not allocated to a specific population area
STBGP-L5K	Surface Transportation Block Grant Program, for use in areas with a population of less than 5,000 persons
STBGP-OS-BRDG	Surface Transportation Block Grant Program, Off-system Bridge
STBGP-TA	Surface Transportation Block Grant Program Transportation Alternatives
STIP	Statewide Transportation Improvement Program
STP-TE	Surface Transportation Program-Transit Enhancements, program under the flexible funding for Transit and Highway Improvements
STRUCTURE NO	Structure Number
SWI	Statewide Investment
TA Set-Aside	Transportation Alternatives Set-Aside Program
TA-B5K200K	Transportation Alternatives Set-Aside, for use in areas with populations between 5,000 and 200,000
TA-FLEX	Transportation Alternatives Set-Aside, for use in areas with populations between 5,000 and 200,000
TA-L5K	Transportation Alternatives Set-Aside, for use in areas with populations less than 5,000
TA-RTP	Transportation Alternatives Set-Aside, funding specific to Recreational Trails Program
TAC	SJTPO Technical Advisory Committee

TAM	Transit Asset Management
TAMP	Transportation Asset Management Plan
TBD	To Be Determined
TEA-21	Transportation Equity Act for the 21st Century
TERM	Transit Economic Requirements Model
TIP	Transportation Improvement Program
TOCS	Traffic Operations Center South
TPM	Transportation Performance Measurement
TRC	Technical Review Committee
TTF	Transportation Trust Fund
TTTR	Truck Travel Time Reliability
TVRM	Total Vehicle Revenue Miles
ULB	Useful Life Benchmark
UPC	Unique Project Code, assigned at inception
US EPA	United States Environmental Protection Agency
USC	United States Code
VMT	Vehicle Miles Traveled
VOCs	Volatile Organic Compounds