

MAURICE RIVER CORRIDOR STUDY

What is the Maurice River Corridor Study?

The Maurice River Corridor Study is looking at opportunities for eco-tourism and future greenway restoration initiatives. The Study is exploring ways to promote economic development in the Corridor by offering connectivity to existing businesses, recreation resources, education centers, and entertainment amenities. This effort will lay the groundwork for the future connectivity of Cumberland County into the more extensive South Jersey Trails or Circuit Trail networks and guide the preservation and enhancement of the Corridor.

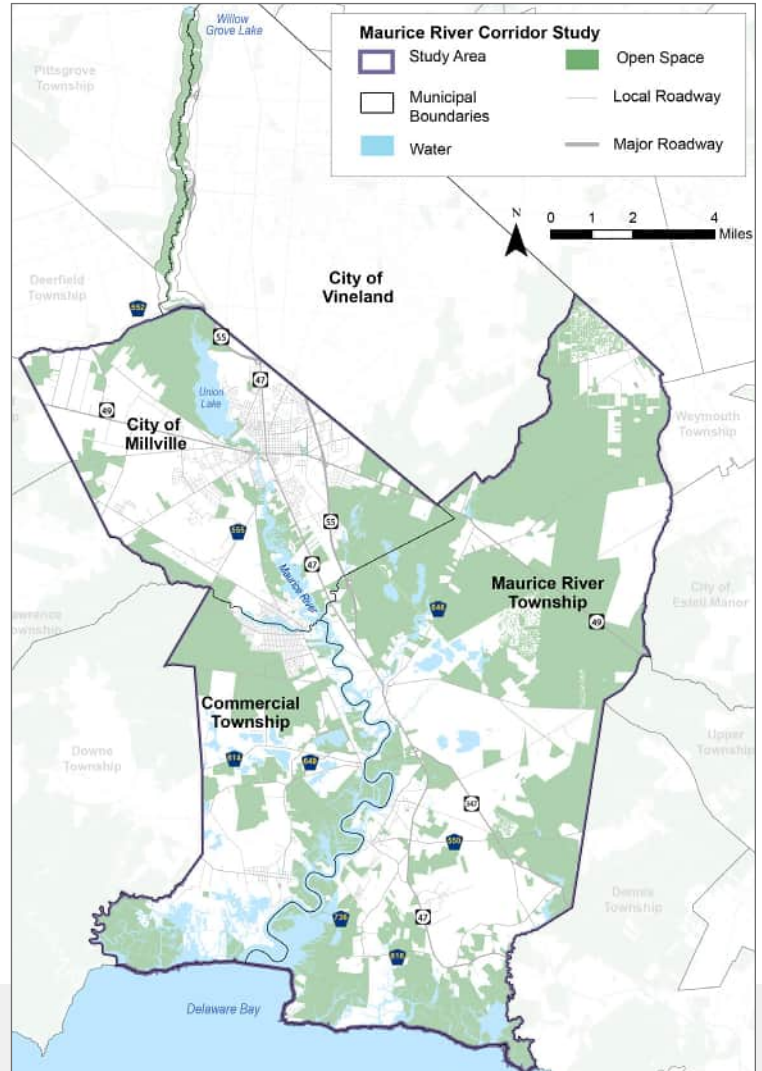
What is will be the outcome Maurice River Corridor Study?

The Corridor Study will include planning recommendations and implementation strategies to advance connectivity, eco-tourism, economic development, and preservation of the Corridor.

Maurice River Corridor

The Maurice River Corridor includes Willow Grove Lake (City of Vineland) to the north, through the City of Millville, Commercial Township, and Maurice River Township to the mouth of the Delaware Bay (see Maurice River Corridor to the right).

Maurice River Corridor



HOW CAN I GET INVOLVED?

Take the online survey and join us for the first workshop on November 2, 2023. More details are below.

For more information, please contact Brittany Dremluk at (e) brittany.dremluk@mbakerintl.com or (p) 609-807-9556.



TAKE THE SURVEY ONLINE

We need your vision to help shape the future of the Maurice River Corridor! This survey is designed to obtain feedback from residents and visitors to the region to identify the priorities and needs for the Study Area.

SCAN FOR SURVEY



Scan the QR Code or visit the online survey at: <https://www.surveymonkey.com/r/TKJH927>



JOIN US FOR A WORKSHOP

What?

Join us to discuss your ideas and strategies for enhancing the Maurice River Corridor.

Where?

Cumberland 4H Extension Center
291 Morton Ave
Millville, NJ 08332

When?

Thursday, November 2, 2023
Start Time: 6:00 pm